



First Release

12th August 2009
IFD110209SSAUG09

Coverage: Great Britain (unless otherwise stated)

Theme: Social and Welfare

DWP Department for Work and Pensions

Issued by:
Information Directorate
Department for Work and Pensions

Telephone:
Press Office: 0203 267 5144

Website:
www.dwp.gov.uk

Statistician:
Nigel Brough
Information Directorate
Department for Work and Pensions
Room BP 5201
Benton Park Road
Newcastle – upon –Tyne
NE98 1YX

Telephone: 0191 216 6769
Email:
nigel.brough1@dwp.gsi.gov.uk

Next publication:
November 2009

DWP QUARTERLY STATISTICAL SUMMARY

Introduction

This Statistical Summary aims to give users a structured overview of the National Statistics published by the Department for Work and Pensions (DWP). Statistics are grouped by component area of DWP and, for each statistic; links are given for users to access more detailed information.

Key benefit statistics and New Deal statistics from 100% sources are available on an internet-based tabulation tool. A similar tabulation tool derived from 5% sample data is also available, however wherever possible 100% data should be used in preference to 5% estimates, as they are more accurate and form DWP's headline statistics. Data is also released via the NOMIS website and the Neighbourhood Statistics website.

The latest National Statistics on benefit claimants, employment programmes, labour market decisions and vacancies produced by DWP were released on 12th August 2009 according to the arrangements approved by the UK Statistics Authority. Not all DWP National Statistics are covered by this release. Some statistics have their own first releases, but links to these are given throughout.

Key Findings

- There were 5.80 million working age benefit claimants at February 2009. This is an increase of 628 thousand in the year to February 2009.
- Employment and Support Allowance (ESA) was introduced on 27th October 2008. Early indications show there were around 176 thousand people claiming Employment and Support Allowance at the end of February 2009. The ESA caseload at November 2008 was revised from 51 thousand to 54 thousand.
- The number of working age claimants of Employment and Support Allowance (ESA) and incapacity benefits totals 2.60 million in February 2009. This figure is 14 thousand lower than February 2008.

Please note – The above ESA and working age client group figures for February 2009 are provisional; see notes to editors section 7

- The number of lone parents claiming Income Support decreased by 6 thousand to 736 thousand in the year to February 2009.
- 3.7 million people had started on a New Deal programme up to May 2009. To date, 2.27 million people have gained a job through the New Deal programme, with 111 thousand people gaining a job through Employment Zones up to April 2009.
- At February 2009, there were 12.4 million people of state pension age claiming a DWP benefit, an increase of 207 thousand since February 2008. Of these, 66% were claiming State Pension only.
- At February 2009, there were 12.2 million claimants of State Pension, a rise of 215 thousand on a year earlier. Of these, 38% were male and 62% female.
- At February 2009, there were 2.72 million claimants of Pension Credit (3.33 million including partners), a fall of 8 thousand on a quarter earlier. Of these, 913 thousand claimed Guarantee Credit only, 1.21 million claimed Guarantee and Savings Credit, and 595 thousand were claiming Savings Credit only.
- At the end of June 2009, the total Child Support Agency (CSA) caseload stood at 1.26 million cases, of which 55% were current scheme cases.
- At February 2009, there were 3.04 million recipients of Disability Living Allowance, 503 thousand recipients of Carer's Allowance, and 1.58 million recipients of Attendance Allowance.

Experimental statistics on benefit flows show:

- There were 422 thousand new claims to working age incapacity benefits, 549 thousand new claims to Income Support, 27 thousand new claims to Bereavement Benefit/Widows Benefit and 677 thousand new claims to State Pension in the year to February 2009.
- There were 574 thousand benefit exits for working age incapacity benefits, 604 thousand for Income Support, 44 thousand for Bereavement Benefit/Widows Benefit and 508 thousand benefit exits for State Pension in the year to February 2009.

ISSN: 1462-9798



Contents

1. Working Age

	<i>Page</i>
1.1 Working age Client Group	3
Individual Benefits	
1.2 Jobseeker's Allowance	6
1.3 Incapacity Benefit & Severe Disablement Allowance	7
1.4 Employment and Support Allowance	
1.5 Income Support	9
1.6 Housing Benefit & Council Tax Benefit	10
1.7 Widow's Benefit & Bereavement Benefit	10
1.8 Fraud and Error statistics (links only)	11
1.9 Take-Up of income-related benefits (links only)	11
1.10 Jobseeker's Allowance sanctions and disallowances	11
1.11 New Deals & Employment Zones	12
1.12 Vacancies handled by Jobcentre Plus	13

2. Pensioners

2.1 Pensioner Client Group	14
Individual Benefits	
2.2 State Pension	15
2.3 Pension Credit	16

3. Disabled and Carers

3.1 Disability Living Allowance	17
3.2 Attendance Allowance	17
3.3 Carer's Allowance	18
3.4 Industrial Injuries Disablement Benefit	19

4. Families & Children

4.1 Child Support Agency cases	20
--------------------------------	----

5. Appeals Service

5.1 Appeals Service lodgements	22
Notes to Editors	23



1. Working Age

1.1 Working Age client group

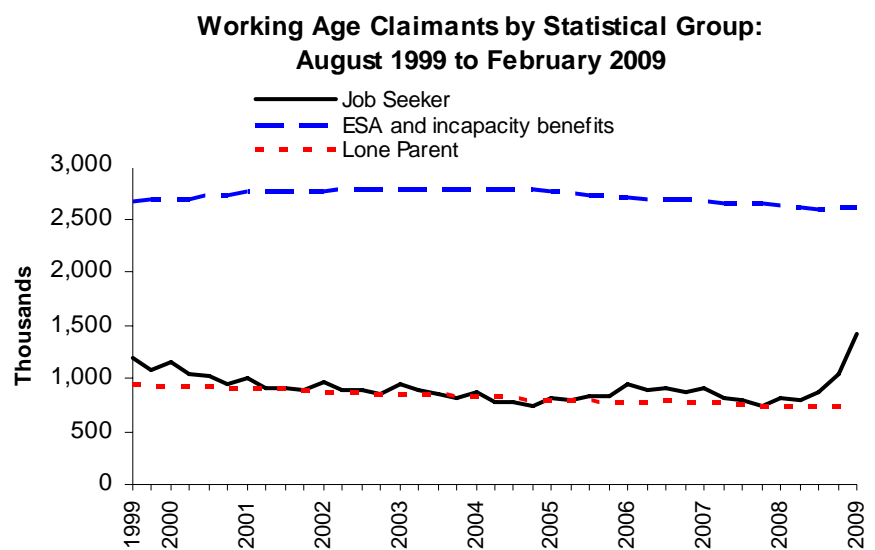
Combines data collected for Jobseeker's Allowance, Incapacity Benefit, Employment and Support Allowance, Severe Disablement Allowance, Disability Living Allowance, Carer's Allowance, Widow's Benefit, Bereavement Benefit and Income Support for working age claimants (including Pension Credit for males aged 60 to 64).

The figures relating to Employment Support Allowance have been thoroughly quality assured to National Statistics standard however it should be noted that this is a new benefit using a new data source which may not have reached steady state in terms of operational processing and retrospection. Hence ESA and working age client group figures (excluding Jobseekers Allowance) for February 2009 are provisional.

Between February 2000 and February 2008, the number of jobseekers in GB fell from 1.15 million to 807 thousand. However, it has risen to 1.42 million at February 2009. The preferred source of JSA figures is the ONS claimant count measure (which is seasonally adjusted) and this has been rising since January 2008.

The lone parent caseload fell from 923 thousand to 736 thousand between February 2000 and February 2009.

The number of working age claimants of Employment and Support Allowance (ESA) and incapacity benefits totals 2.60 million in February 2009. This shows a year-on-year decrease of 14 thousand and a decrease of 2 thousand on the revised caseload for November 2008.



Headline figures for Incapacity Benefit and Severe Disablement Allowance are shown in Table 1.2 and differ to figures shown in Table 1.1 due to the inclusion of ESA in Table 1.1.

Please note that the on-line tabulation tool for this client group has been reinstated now that development work to embed ESA is complete.



Table 1.1 Working Age claimants by Statistical Group: August 1999 – February 2009

	Total	Job Seeker ²	Employment and Support Allowance and incapacity benefits ³	Lone Parent ⁴	Carer ⁵	Other Income Related ⁶	Disabled ⁷	Bereaved ⁸
Aug -99	"	1,181.86	2,655.38	945.06	316.13	221.31	"	"
Nov -99	"	1,083.03	2,674.71	930.24	316.50	218.37	"	"
Feb -00	"	1,154.97	2,676.39	923.47	313.58	216.97	"	"
May -00	"	1,037.01	2,686.30	919.43	310.88	210.80	"	"
Aug -00	"	1,015.83	2,714.85	920.10	309.67	197.95	"	"
Nov -00	"	948.66	2,722.57	905.76	311.56	196.69	"	"
Feb -01	"	1,001.08	2,750.45	908.21	313.96	182.81	"	"
May -01	"	909.15	2,753.66	900.43	319.59	180.15	"	"
Aug -01	"	907.68	2,763.62	900.22	323.83	175.41	"	"
Nov -01	"	880.36	2,746.02	878.59	328.62	179.08	"	"
Feb -02	"	955.45	2,745.58	877.11	332.02	176.62	"	"
May -02	5,455.75	877.38	2,765.73	870.95	335.79	165.60	245.27	195.02
Aug -02	5,481.48	890.54	2,769.36	875.04	339.91	167.19	249.72	189.71
Nov -02	5,428.63	850.05	2,776.56	856.23	343.72	161.36	256.58	184.13
Feb -03	5,514.28	946.16	2,776.54	848.85	346.17	156.33	260.92	179.32
May -03	5,459.68	885.78	2,773.61	855.81	347.94	155.96	266.25	174.33
Aug -03	5,425.85	851.37	2,777.06	851.73	350.41	155.26	270.15	169.88
Nov -03	5,363.74	803.88	2,780.49	831.75	353.25	154.20	275.51	164.67
Feb -04	5,426.42	867.42	2,777.53	830.25	355.81	155.20	280.13	160.09
May -04	5,327.35	777.40	2,772.85	823.27	359.25	155.42	283.33	155.83
Aug -04	5,321.26	769.25	2,774.93	818.10	360.08	158.20	289.12	151.59
Nov -04	5,270.77	741.06	2,772.18	796.53	361.42	157.94	294.15	147.49
Feb -05	5,327.77	819.68	2,757.65	793.13	362.04	153.93	297.23	144.11
May -05	5,289.13	800.66	2,741.62	789.32	363.76	151.09	300.96	141.73
Aug -05	5,302.72	825.11	2,725.47	789.35	365.08	153.71	305.84	138.17
Nov -05	5,287.66	836.71	2,710.50	778.56	363.34	155.74	309.31	133.51
Feb -06	5,384.74	935.20	2,705.47	777.10	368.66	153.06	313.85	131.40
May -06	5,325.77	895.88	2,688.02	774.86	368.50	152.70	317.04	128.78
Aug -06	5,335.22	900.92	2,683.00	783.19	369.81	153.12	319.13	126.06
Nov -06	5,288.35	860.22	2,672.97	775.62	371.71	161.10	326.64	120.09
Feb -07	5,321.68	904.04	2,662.13	771.35	373.83	163.32	329.75	117.26
May -07	5,207.27	807.27	2,643.21	765.62	374.84	167.05	335.14	114.15
Aug -07	5,187.14	788.45	2,641.11	763.55	376.03	167.84	340.61	109.55
Nov -07	5,124.68	741.10	2,641.70	741.83	379.35	167.29	346.16	107.25
Feb -08	5,174.88	806.70	2,617.88	741.71	384.49	169.95	349.38	104.78
May -08	5,142.63	787.87	2,595.83	738.64	387.56	173.33	356.50	102.90
Aug -08	5,232.88	868.73	2,590.61	744.68	392.73	176.23	360.08	99.81
Nov -08 ¹¹	5,404.12	1,036.48	2,605.51	728.98	396.80	178.84	360.47	97.04
Feb -09 ¹²	5,802.48	1,421.60	2,603.54	736.04	400.12	181.88	363.82	95.49

Source: DWP Work and Pensions Longitudinal Study

Notes:

See page 5 for notes on Table 1.1



Notes relating to Table 1.1

1. *Claimants have been assigned to a statistical group according to a hierarchy. The order is shown in the table, i.e. 'Job Seekers' followed by 'Employment and Support Allowance and incapacity benefits'.*
2. *'Job Seekers' are recipients of Job Seeker's Allowance.*
3. *'From November 2008 the "incapacity benefits group" includes Employment and Support Allowance (ESA). ESA replaced Incapacity Benefit and Income Support paid on the grounds of incapacity for new claims from 27th October 2008. Prior to this the "incapacity benefits group" referred to claimants of Incapacity Benefit (including credits only) or Severe Disablement Allowance including people claiming IS on the grounds of Incapacity.*
4. *'Lone Parents' are single recipients of Income Support with a child under 16.*
5. *'Carers' are recipients of Carers Allowance.*
6. *'Others on Income Related Benefit' are other recipients of Income Support (including Income Support Disability Premium) or Pension Credit.*
7. *'Disabled' are recipients of Disability Living Allowance. Industrial Injuries benefits data is not available.*
8. *'Bereaved' are recipients of Widow's Benefit or Bereavement Benefit.*
9. *Totals are not shown prior to May 2002 as Disability Living Allowance data is not available. Also means that complete data for 'Disabled' and 'Bereaved' statistical groups are not available either.*
10. *Housing Benefit and Council Tax Benefit data are not currently available but are work in progress (see page 11).*
11. *The figures relating to the Employment and Support Allowance and incapacity benefits for November 2008 have been revised upwards to reflect late notifications of claims.*
12. *The figures relating to Employment Support Allowance have been thoroughly quality assured to National Statistics standard however it should be noted that this is a new benefit using a new data source which may not have reached steady state in terms of operational processing and retrospection. Hence ESA and working age client group figures (excluding Jobseekers Allowance) for February 2009 are provisional.*

Latest statistical data available from: <http://statistics.dwp.gov.uk/asd/tabtool.asp>



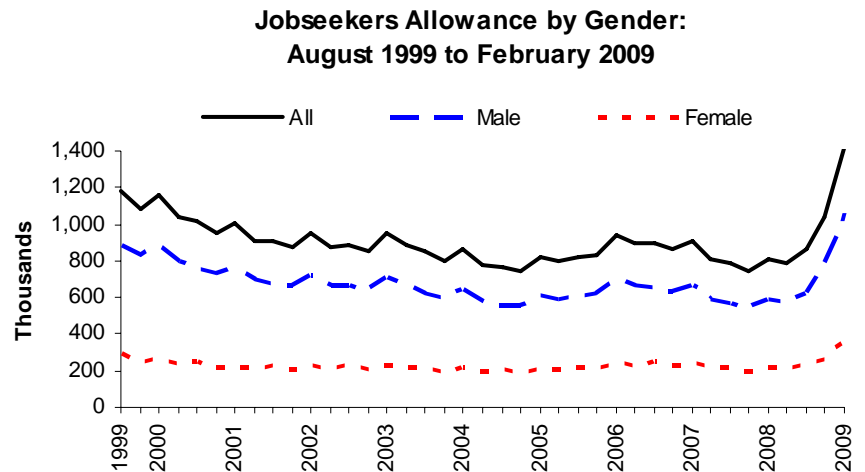
1.2 Jobseeker's Allowance

Jobseeker's Allowance (JSA) was introduced on 7th October 1996 and has both contributory and income-related elements. It is paid to people under state pension age who are available for and actively seeking work of at least forty hours per week.

The preferred source of JSA figures is the ONS claimant count measure (which is seasonally adjusted) and this has been rising since January 2008.

DWP produce a separate set of Jobseeker's Allowance figures to enable cross-benefit analysis and supply a wider range of breakdowns, and these are provided in this release.

The DWP figures at February 2009 show the total number of Jobseeker's Allowance claimants was 1.42 million. Female claimants represented 26% of the JSA caseload (363 thousand), while males represented 74% (1,058 thousand). The total caseload has risen by 615 thousand since February 2008.



Latest statistical data available from:

<http://statistics.dwp.gov.uk/asd/tabtool.asp>



1.3 Incapacity Benefit and Severe Disablement Allowance

Incapacity benefits consist of Incapacity Benefit (introduced on 13th April 1995 and paid to people who are incapable of work and who have paid sufficient contributions throughout their working life) and Severe Disablement Allowance (SDA). From 27th October 2008, Employment & Support Allowance (ESA) replaced Incapacity Benefit and Income Support paid on the grounds of incapacity for new claims. **Please note claimants of ESA are not included in figures in Section 1.3 or in Table 1.2 on page 8.**

At February 2009, there were 2.43 million working age claimants of incapacity benefits (Incapacity Benefit or Severe Disablement Allowance), a decrease of 190 thousand on a year earlier. 58% of claimants were men and 42% women. Both the male and female caseloads are now falling: males by 114 thousand and females by 76 thousand in the year to February 2009.

At February 2009, 61% (1.49 million) of working age claimants were beneficiaries (i.e. were paid Incapacity Benefit or Severe Disablement Allowance), with the remaining 936 thousand receiving National Insurance Credits, many of whom also receive income Support. A further 41 thousand were claimants above state pension age: these were almost all recipients of Severe Disablement Allowance.

There were 17 thousand new working age claimants of incapacity benefits in the February 2009 quarter, which represents 0.7% of the February caseload. Over the same period, 130 thousand working age claimants left the benefits, 5% of the caseload at February 2009.

In the year to February 2009, there were a total of 422 thousand new claims for working age incapacity benefits and 574 thousand claims were closed.

Latest statistical data available from: <http://statistics.dwp.gov.uk/asd/tabtool.asp>

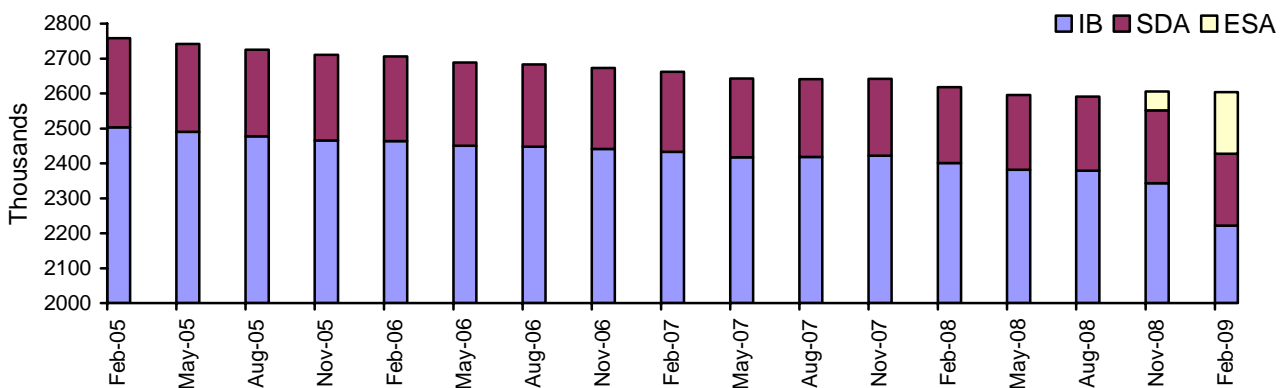
1.4 Employment and Support Allowance

From 27th October 2008, Employment & Support Allowance (ESA) replaced Incapacity Benefit and Income Support paid on the grounds of incapacity for new claims. The figures relating to Employment Support Allowance have been thoroughly quality assured to National Statistics standard however it should be noted that this is a new benefit using a new data source which may not have reached steady state in terms of operational processing and retrospection. ESA figures for November 2008 have been revised and are now final, February 2009 remain provisional.

At February 2009, there were 176 thousand claimants of Employment and Support Allowance. 60% of claimants were men and 40% women.

By the end of February 2009, 20 thousand claimants had left Employment and Support Allowance, accounting for 1 in 10 of new claims.

Working Age Claimants: Incapacity benefits and Employment and Support Allowance



Latest statistical data available from: <http://statistics.dwp.gov.uk/asd/tabtool.asp>

Table 1.2 Incapacity benefits claimants & beneficiaries: August 1999 – February 2009
 Figures exclude Employment and Support allowance claimants

Thousands

	All IB/SDA claimants ^{1,2}			All IB/SDA beneficiaries ^{1,2}		
	All ages	Working Age	State Pension Age	All ages	Working Age	State Pension Age
Aug -99	2,732.50	2,655.46	77.05	1,978.56	1,902.14	76.42
Nov -99	2,738.13	2,674.81	63.32	1,967.96	1,905.13	62.83
Feb -00	2,724.03	2,676.50	47.53	1,949.96	1,902.81	47.15
May -00	2,728.09	2,686.40	41.69	1,941.20	1,899.81	41.39
Aug -00	2,756.51	2,714.95	41.55	1,949.08	1,907.75	41.33
Nov -00	2,764.14	2,722.65	41.49	1,945.44	1,904.11	41.33
Feb -01	2,792.03	2,750.53	41.50	1,961.19	1,919.80	41.39
May -01	2,795.34	2,753.74	41.60	1,955.00	1,913.52	41.49
Aug -01	2,805.45	2,763.87	41.58	1,947.63	1,906.15	41.49
Nov -01	2,787.71	2,746.07	41.64	1,926.79	1,885.22	41.56
Feb -02	2,787.22	2,745.67	41.56	1,923.90	1,882.45	41.45
May -02	2,807.63	2,765.82	41.80	1,925.86	1,884.16	41.70
Aug -02	2,811.43	2,769.70	41.73	1,918.07	1,876.43	41.63
Nov -02	2,818.48	2,776.64	41.83	1,912.53	1,870.79	41.74
Feb -03	2,818.57	2,776.63	41.94	1,908.90	1,867.06	41.84
May -03	2,815.66	2,773.71	41.95	1,897.03	1,855.19	41.84
Aug -03	2,819.05	2,777.28	41.77	1,888.80	1,847.11	41.69
Nov -03	2,822.27	2,780.58	41.70	1,881.88	1,840.25	41.63
Feb -04	2,819.16	2,777.62	41.54	1,873.81	1,832.35	41.46
May -04	2,814.71	2,772.93	41.79	1,859.96	1,818.25	41.70
Aug -04	2,817.01	2,775.10	41.90	1,849.78	1,807.95	41.83
Nov -04	2,814.41	2,772.23	42.17	1,840.28	1,798.18	42.10
Feb -05	2,799.87	2,757.71	42.17	1,827.15	1,785.08	42.08
May -05	2,783.72	2,741.67	42.05	1,809.98	1,768.02	41.96
Aug -05	2,767.74	2,725.55	42.20	1,793.00	1,750.89	42.11
Nov -05	2,752.90	2,710.74	42.16	1,780.31	1,738.21	42.10
Feb -06	2,747.49	2,705.58	41.91	1,768.66	1,726.82	41.84
May -06	2,730.00	2,688.14	41.86	1,750.91	1,709.12	41.79
Aug -06	2,724.98	2,683.13	41.85	1,738.64	1,696.87	41.78
Nov -06	2,714.95	2,673.05	41.90	1,724.35	1,682.52	41.83
Feb -07	2,704.10	2,662.21	41.89	1,711.63	1,669.81	41.82
May -07	2,685.32	2,643.29	42.03	1,692.66	1,650.71	41.95
Aug -07	2,683.16	2,641.11	42.05	1,681.86	1,639.88	41.98
Nov -07	2,683.75	2,641.71	42.05	1,673.10	1,631.12	41.98
Feb -08	2,659.65	2,617.88	41.77	1,655.01	1,613.31	41.70
May -08	2,637.56	2,595.83	41.73	1,634.92	1,593.27	41.65
Aug -08	2,632.00	2,590.61	41.38	1,624.20	1,582.89	41.31
Nov -08	2,593.01	2,551.88	41.13	1,597.04	1,555.97	41.07
Feb -09	2,468.62	2,427.82	40.80	1,533.01	1,492.28	40.73

Source: DWP Work and Pensions Longitudinal Study

1. 'IB' – Incapacity Benefit, 'SDA' – Severe Disablement Allowance.
2. Figures on 'IB' beneficiaries show those claimants who are receiving money. 'IB' claimants include those beneficiaries plus, those receiving National Insurance Credits and no monetary payment (many of whom will also receive Income Support).
3. 'Incapacity benefits' refer to recipients of 'IB' or 'SDA', including credits only cases in receipt of Income Support on the grounds of incapacity. Numbers of Working Age claimants of 'incapacity benefits' (IB/SDA) are shown in both the Working Age Client Group and IB/SDA sections of this release. Working Age IB/SDA totals vary slightly between the two sections (a difference of approx. 0.5%) because of minor differences in methodology.
4. Figures exclude Employment and Support Allowance which replaced Incapacity Benefit and Income Support paid on the grounds of incapacity for new claims. Claimants of ESA are not included in the November 2008 figures onwards.



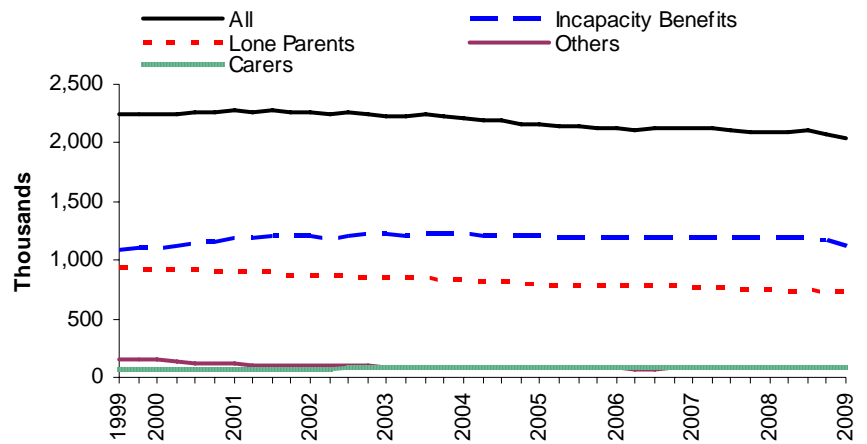
1.5 Income Support

*Income Support (IS) was introduced on 11th April 1988 and is an income-related benefit that can be claimed by people aged 16-59 that work fewer than 16 hours a week and have insufficient income to meet their needs. Prior to the introduction of Pension Credit in October 2003, IS was available to people aged 60 and over. From 27th October 2008, Employment & Support Allowance (ESA) replaced Incapacity Benefit and Income Support paid on the grounds of incapacity for new claims. **Claimants of ESA are not included in figures in Section 1.5.***

Pension Credit (PC) replaced Minimum Income Guarantee (MIG) in Income Support on 6 October 2003. MIG claimants have been excluded from these data.

At February 2009, the total number of Income Support (IS) claimants was 2.03 million. Claimants of incapacity benefits represented 55% of the IS caseload (1.13 million). Lone Parents (all single claimants with dependants, excluding claimants of incapacity benefits) represented 36% of the IS caseload (736 thousand), while Carers and Others represented 8% of the caseload (172 thousand) (please note, that percentages do not total due to rounding).

**Income Support by Statistical Group:
August 1999 to February 2009**



There were 94 thousand new claimants of Income Support in the February 2009 quarter, which represents 5% of the February caseload. Over the same period, 137 thousand claimants left the benefit, 7% of the caseload at end of February 2009.

In the year to February 2009, there were a total of 549 thousand new claims for Income Support and 604 thousand claims were closed.

Table 1.3 Income Support Lone Parents claimants: February 2009

Thousands

	Total	Female	Male
all ages	736.04	703.72	32.32
unknown age	0.01	0.01	-
under 18	5.82	5.80	0.02
18-24	164.77	163.29	1.48
25-34	277.62	269.44	8.18
35-44	221.46	207.01	14.45
45-54	62.16	55.02	7.15
55-59	4.20	3.16	1.04

Source: DWP Work and Pensions Longitudinal Study

1. Lone Parents are all single claimants with dependants, but excluding claimants of incapacity benefits

Latest statistical data available from:

<http://statistics.dwp.gov.uk/asd/tabtool.asp>



1.6 Housing Benefit and Council Tax Benefit

Both Housing Benefit (HB) and Council Tax Benefit (CTB) were introduced on 1st April 1983. HB is an income-related benefit designed to help people on low incomes pay for rented accommodation whether in or out of work. CTB is calculated in a similar way and has been designed to help people on low incomes pay their Council.

Housing Benefit and Council Tax Benefit (HB/CTB) National Statistics will be published on the **19th August 2009**. This new release will update the latest published National Statistics which relate to **August 2007**.

Further information on the HB/CTB can be found at: <http://statistics.dwp.gov.uk/asd/hbctb.asp>

Latest statistical data available from: <http://statistics.dwp.gov.uk/asd/hbctb.asp>

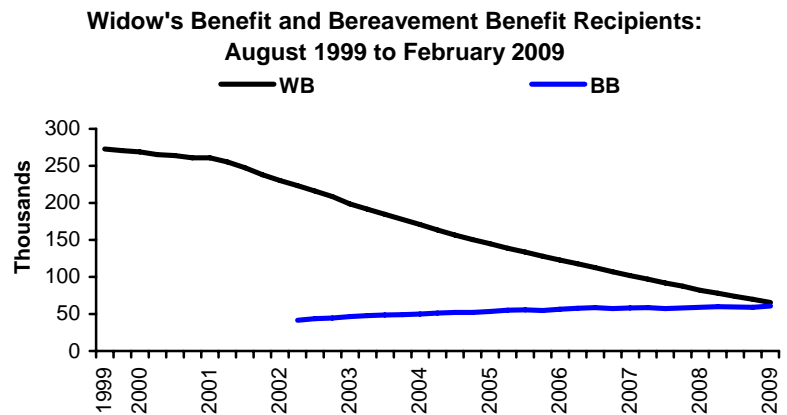
1.7 Widow's Benefit & Bereavement Benefit

Widow's Benefit (WB) was introduced on 6th July 1948 and is payable to women widowed between 11th April 1988 and 8th April 2001 inclusive. There are three types of WB: Widow's Payment, Widowed Mother's Allowance and Widow's Pension. Women widowed before 11th April 1988 continue to receive Widow's Benefit based on the rules that existed before that date.

Bereavement Benefit (BB) was introduced on 9th April 2001 as a replacement for Widow's Benefit. It is payable to both men and women widowed on or after 9th April 2001. There are three types of BB: Bereavement Payment, Widowed Parent's Allowance and Bereavement Allowance.

At February 2009, there were 66 thousand claimants of Widow's Benefit, a fall of 16 thousand on a year earlier. Of these, 55 thousand were in receipt of Widow's Pension and 11 thousand Widowed Mother's Allowance.

At February 2009, there were 61 thousand claimants of Bereavement Benefit, an increase of 2 thousand on a year earlier. Of these, 19 thousand were in receipt of Bereavement Allowance and 42 thousand in receipt of Widowed Parent's Allowance.



There were 7 thousand new claimants of Bereavement Benefit/Widows Benefit in the February 2009 quarter, which represents 6% of the February caseload.

Over the same period, 10 thousand claimants left the benefits, 8% of the caseload at February 2009.

In the year to February 2009, there were a total of 27 thousand new claims for Bereavement Benefit/Widows Benefit and 44 thousand claims were closed.

Latest statistical data available from: <http://statistics.dwp.gov.uk/asd/tabtool.asp>



1.8 Fraud and Error statistics (link)

National Statistics are published regularly, presenting six-monthly estimates of fraud and error in claims for Income Support, Jobseeker’s Allowance, Pension Credit and Housing Benefit, along with an annual estimate of the level of fraud and error in the benefit system as a whole. One-off benefit reviews have been carried out from time to time to estimate fraud and error in claims for other benefits. All these reports can be found at http://research.dwp.gov.uk/asd/asd2/fraud_error.asp

1.9 Take-Up of Income-Related Benefits (link)

Publications contain information on the take-up of the main income-related benefits in Great Britain: Income Support, Pension Credit, Housing Benefit, Council Tax Benefit and Jobseeker’s Allowance (income based). Take-up is measured in two ways. Expenditure take-up compares the total amount of benefit received in the course of a year with the total amount that would have been received if everyone took up their entitlement for the full period of entitlement. Caseload take-up compares the number of benefit claimants – averaged over the year – with the number who would be receiving if everyone took up their entitlement for the full period of entitlement. Data is sourced from the Family Resources Survey and administrative benefit records. Latest published figures are available at <http://research.dwp.gov.uk/asd/irb.asp>

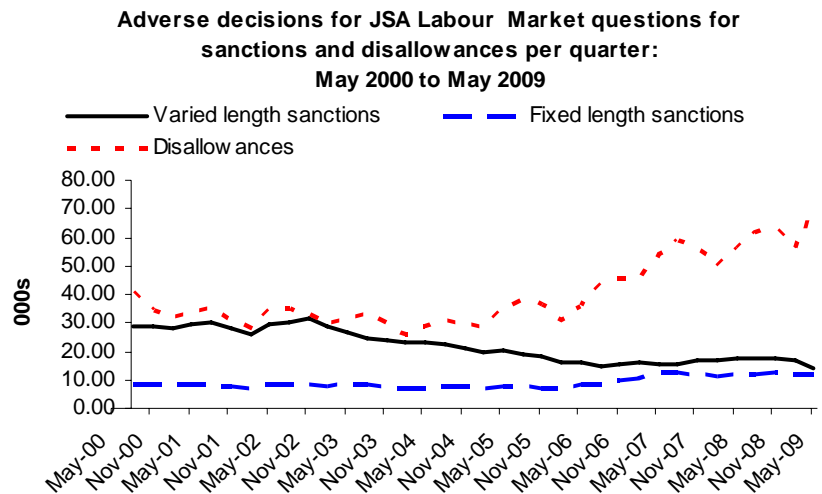
1.10 Jobseeker’s Allowance sanction and disallowance decisions

A JSA claimant can have their claim sanctioned (payment is temporarily suspended) or disallowed (entitlement ends) if they are deemed not to have just cause for failing to fulfil the conditions of their claim. Sanctions can be ‘Varied length’ (anything up to 26 weeks) or ‘Fixed length’ (2, 4 or 26 weeks). Disallowances result in the claim ending.

In the quarter ending May 2009 there were 159 thousand decisions made, of which 95 thousand were adverse decisions (i.e. a sanction or disallowance was applied).

Of these, 14 thousand were varied length sanctions, 12 thousand were fixed length sanctions and 70 thousand were disallowance decisions. 60% of decisions made in this quarter resulted in an adverse decision.

NB – this summary includes data on decisions made for sanction referrals only, not opinions.



Latest statistical data available from: <http://83.244.183.180/sanction/sanction/LIVE/tabtool.html>



1.11 New Deals & Employment Zones

New Deal for Young People was established in 1998 aimed at people aged 18 to 24 unemployed for at least 6 months. Since then a range of other mandatory and voluntary New Deal programmes have been established aimed at specific client groups.

3.44 million people had started on a New Deal programme up to May 2009.

Up to February 2009, some 2.17 million people have gained a job through the New Deal programme, with an additional 111 thousand people gaining a job through Employment Zones up to April 2009.

New Deal for Disabled People (NDDP) and New Deal for Lone Parents (NDLP) participants and leavers series has been withdrawn and will be revised at the earliest available opportunity.

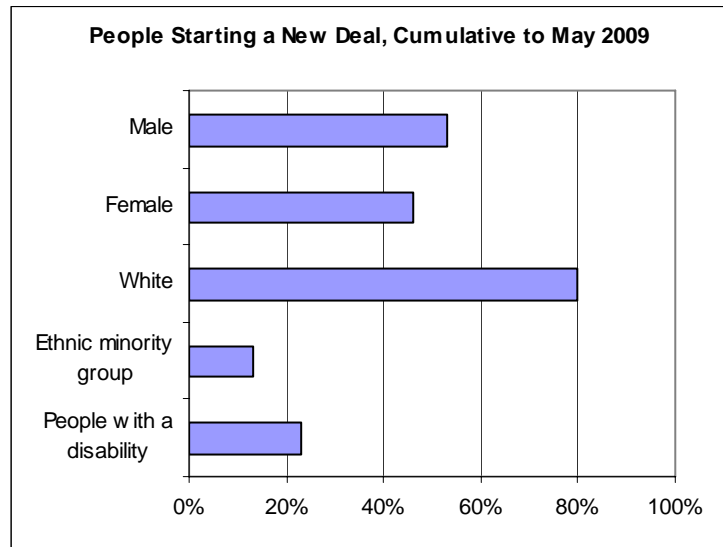


Table 1.4 Summary of New Deal and Employment Zones

Thousands

	New Deal for:						Employment Zones
	Young People	25+	Lone Parents ³	Disabled People ³	50+ ⁴	Partners ⁵	
<i>latest data</i> ¹							
People Starting ²	1,449.9	829.3	964.2	326.4	106.00	19.6	226.4
Currently Participating	101.1	56.9	-	-	16.2	4.6	27.3
People gaining a Job	875.7	363.2	625.5	202.2	194.4	7.9	110.7

Source: New Deal Evaluation Database

1. Latest data relates to end of May 2009 for people starting NDYP, ND25+, NDLP, NDDP, ND50+ and NDP. For current participants and people gaining a job through NDYP, ND25+, NDLP, NDDP, ND50+ and NDP, latest data relates to the end of February 2009. Latest Employment Zone data is from April 2009.
2. The sum of people starting and gaining a job for each separate New Deal will not equal the number of people starting and gaining a job through the New Deal as a whole (as indicated above) because some people will start and gain a job through more than one New Deal programme.
3. Statistics relating to current participants and leavers from NDLP and NDDP have been withdrawn for quality reasons.
4. Starts for ND50+ are from January 2004 onwards. The jobs figures for ND50+ also include 98,040 individuals who had received Employment Credit up to March 2003.
5. Starts for NDP also include 7,820 individuals from starts up to March 2004 and jobs for NDP also include a further 1,860 jobs from up to March 2004.

Latest statistical data available from:

http://statistics.dwp.gov.uk/asd/asd1/tabtools/tabtool_nd.asp



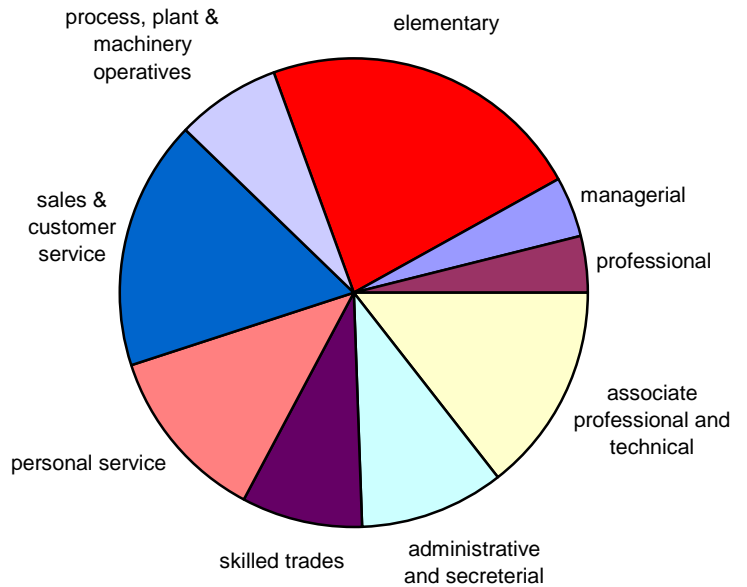
1.12 Vacancies handled by Jobcentre Plus

As the public employment service for Great Britain, Jobcentre Plus handle a significant share of all vacancies advertised by employers, albeit that vacancies notified to Jobcentre Plus do not represent the total number of vacancies in the whole economy.

On average, 238 thousand vacancies a month were notified to Jobcentre Plus between January and June 2009. Most commonly these are for elementary occupations (22%) and sales/customer services (17%). 14% of notified vacancies are in the North West region compared to 10% in London, 5% Wales and 9% Scotland.

As at June 2009, the number of unfilled vacancies available to jobseekers was 211 thousand.

Vacancies notified by occupation: January to June 2009



Latest statistical data available from <http://www.nomisweb.co.uk>

2. Pensioners

2.1 Pensioner client group

The Pensioner client group covers claimants, over State Pension age (currently 60 for females and 65 for males), of at least one of the following benefits: State Pension, Pension Credit, Attendance Allowance, Widow's Benefit, Disability Living Allowance, Incapacity Benefit, and Severe Disablement Allowance. They are split into statistical groups that reflect their main reason for claiming benefit.

At February 2009 there were 12.4 million claimants in the Pensioner Client Group, an increase of 207 thousand since February 2008. Of these, 20% were in receipt of Pension Credit. 49% of these Pension Credit claimants were also claiming Attendance Allowance or Disability Living Allowance.

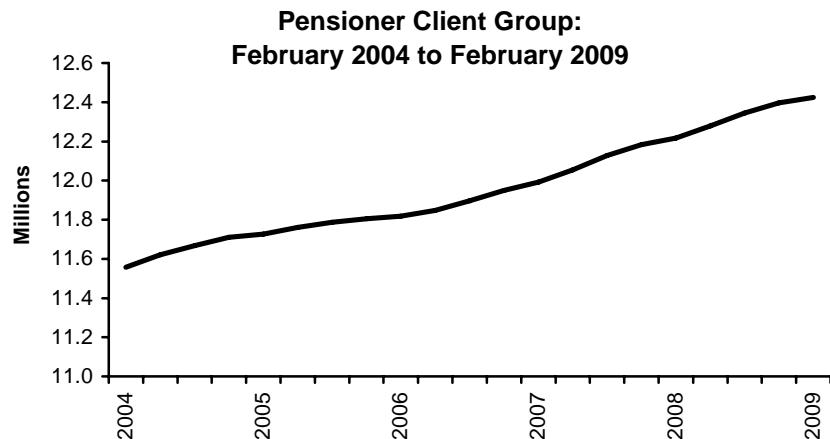


Table 2.1 Pensioner Client Group recipients: February 2004 – February 2009

Thousands

	Total	SP and PC: Disabled	SP and PC: Not Disabled	SP but not PC: Disabled	SP but not PC: Not Disabled	PC but not SP: Disabled	PC but not SP: Not Disabled	Neither SP nor PC: Disabled	Neither SP nor PC: Not Disabled
Feb-04	11,557.87	868.52	1,083.74	1,360.45	8,039.64	71.27	70.62	38.89	24.72
May-04	11,620.15	959.75	1,193.56	1,296.11	7,964.86	71.80	71.35	38.08	24.64
Aug-04	11,668.11	1,003.82	1,245.69	1,282.39	7,929.91	72.57	71.81	37.76	24.16
Nov-04	11,710.58	1,028.05	1,255.69	1,280.46	7,938.11	73.38	72.83	37.97	24.10
Feb-05	11,726.47	1,037.26	1,268.33	1,273.89	7,938.28	73.49	73.51	37.74	23.98
May-05	11,760.74	1,052.43	1,281.60	1,281.06	7,939.49	73.17	72.88	37.11	23.00
Aug-05	11,786.58	1,065.96	1,280.72	1,298.46	7,933.04	73.71	73.80	37.60	23.30
Nov-05	11,804.43	1,075.10	1,278.42	1,307.14	7,929.69	75.54	75.42	39.48	23.63
Feb-06	11,817.23	1,081.17	1,277.97	1,315.46	7,934.50	73.53	73.75	37.77	23.08
May-06	11,847.97	1,088.48	1,278.31	1,322.93	7,949.50	73.76	74.05	38.06	22.88
Aug-06	11,896.50	1,100.55	1,274.33	1,338.09	7,973.44	74.29	74.59	38.42	22.78
Nov-06	11,949.62	1,113.70	1,269.09	1,351.57	8,004.82	74.87	74.34	38.69	22.54
Feb-07	11,992.45	1,114.06	1,260.09	1,356.42	8,052.20	74.56	74.19	38.60	22.33
May-07	12,053.77	1,122.36	1,252.29	1,370.93	8,097.85	74.82	74.26	38.97	22.29
Aug-07	12,127.16	1,133.46	1,243.25	1,389.71	8,152.28	74.55	73.62	38.92	21.37
Nov-07	12,182.27	1,140.25	1,234.23	1,403.83	8,197.32	74.21	73.15	38.72	20.56
Feb-08	12,216.39	1,139.13	1,223.86	1,410.21	8,237.94	73.56	72.92	38.75	20.02
May-08	12,279.39	1,144.14	1,214.40	1,428.68	8,287.34	73.68	72.69	38.97	19.50
Aug-08	12,344.41	1,155.40	1,206.30	1,448.69	8,331.36	73.72	72.04	38.76	18.14
Nov-08	12,396.06	1,164.55	1,201.42	1,464.57	8,365.41	73.51	71.41	38.17	17.02
Feb-09	12,423.79	1,159.85	1,193.82	1,469.67	8,402.45	73.03	70.86	37.81	16.31

Source: DWP Work and Pensions Longitudinal Study

Latest statistical data available from:

<http://statistics.dwp.gov.uk/asd/tabtool.asp>



2.2 State Pension

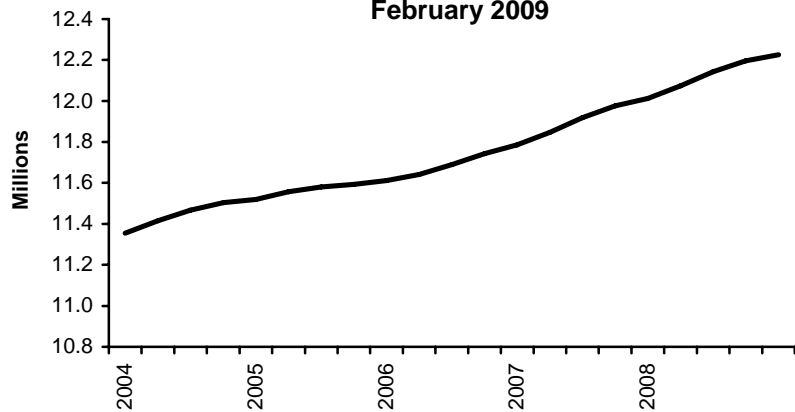
State Pension (SP) was introduced on 1st January 1909 and is paid to people who have reached the state pension age and who fulfil the residency and contributions conditions. The state pension age for men is 65 whilst the State Pension age for women born on or after 6 April 1950 but before 6 April 1955 is rising from 60 to 65 between 2010 and 2020. The State Pension age for women born on or after 6 April 1955 but before 6 April 1959 will be 65. State Pension age will increase for both men and women from age 65 to 68 between 2024 and 2046.

At February 2009, there were 12.2 million claimants of State Pension, a rise of 215 thousand on a year earlier. Of these, 38% were male and 62% female.

The average weekly amount in payment at February 2009 was £96.62, a rise of £4.52 since February 2008.

In quarter to February 2009, there were a total of 167 thousand new claims for State Pension which represents 1.4% of the caseload. Over the same period, 149 thousand claimants left the benefit, representing 1.2% of the caseload at February 2009.

State Pension Recipients: February 2004 to February 2009



In the year to February 2009, there were a total of 677 thousand new claims for State Pension and 508 thousand claims were closed.

Table 2.2 State Pension recipients: February 2004 – February 2009

	All	Male	Female
Feb -04	11,354.10	4,255.94	7,098.16
May -04	11,416.15	4,281.06	7,135.09
Aug -04	11,466.30	4,301.68	7,164.61
Nov -04	11,504.32	4,315.80	7,188.52
Feb -05	11,519.88	4,322.52	7,197.36
May -05	11,556.81	4,342.15	7,214.66
Aug -05	11,580.50	4,354.75	7,225.74
Nov -05	11,592.75	4,362.20	7,230.55
Feb -06	11,611.59	4,369.79	7,241.80
May -06	11,641.83	4,379.54	7,262.29
Aug -06	11,689.12	4,393.60	7,295.52
Nov -06	11,742.01	4,408.91	7,333.10
Feb -07	11,785.67	4,418.99	7,366.68
May -07	11,846.43	4,437.99	7,408.44
Aug -07	11,919.12	4,463.09	7,456.04
Nov -07	11,976.03	4,484.97	7,491.06
Feb -08	12,011.54	4,499.53	7,512.02
May -08	12,074.99	4,526.79	7,548.20
Aug -08	12,142.20	4,555.63	7,586.57
Nov -08	12,196.44	4,578.74	7,617.70
Feb-09	12,226.26	4,594.18	7,632.08

Source: DWP Work and Pensions Longitudinal Study

Latest statistical data available from:

<http://statistics.dwp.gov.uk/asd/tabtool.asp>

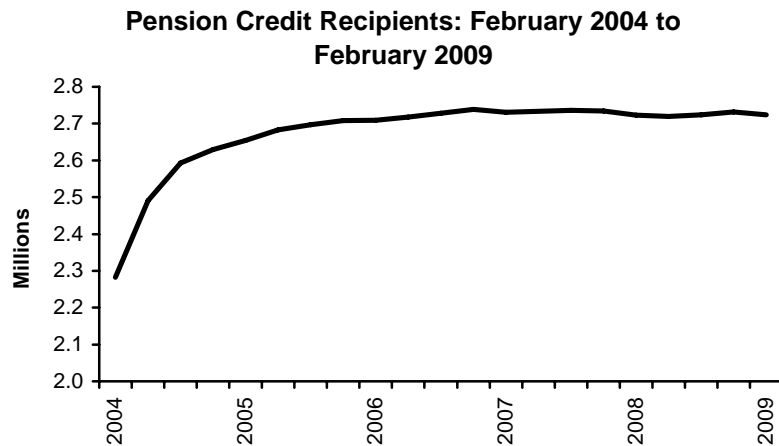


2.3 Pension Credit

Pension Credit (PC) was introduced on 6th October 2003 and replaced Minimum Income Guarantee (MIG). For people aged 60 or over, the Guarantee Credit element guarantees an income at a set level. People aged 65 or over (and couples where one member is 65 or over) may also be entitled to Savings Credit if they have modest income from savings, investments or a second pension.

At February 2009, there were 2.72 million claimants of Pension Credit (3.33 million including partners), a fall of 8 thousand on the previous quarter. Of these, 913 thousand claimed Guarantee Credit only, 1.21 million claimed Guarantee and Savings Credit, and 595 thousand were claiming Savings Credit only.

The average weekly amount of Pension Credit in payment at February 2009 was £53.37, a rise of £2.92 since February 2008.



Experimental statistics on benefit flows show there were 256 thousand new claims to Pension Credit in the year to February 2009. A small number of claims take a long time to process and are still outstanding at the cut off point for producing these statistics. This means that the statistics undercounts the final number of claims by a small percentage (around two percent).

Table 2.3 Pension Credit claimants: February 2004 – February 2009

	<i>Thousands</i>				
	Total	Guarantee Credit only	Guarantee Credit & Savings Credit	Savings Credit only	Still on Minimum Income Guarantee
Feb-04	2,282.29	719.18	1,196.59	365.26	1.25
May -04	2,490.76	735.03	1,269.45	485.98	0.31
Aug -04	2,592.59	749.17	1,293.25	549.99	0.18
Nov -04	2,629.58	759.90	1,298.96	570.58	0.14
Feb -05	2,654.67	763.15	1,313.11	578.36	0.06
May -05	2,682.73	767.26	1,321.68	593.74	0.04
Aug -05	2,696.66	772.40	1,317.18	607.04	0.04
Nov -05	2,708.05	776.94	1,313.48	617.60	0.04
Feb -06	2,709.22	773.16	1,332.11	603.93	0.04
May -06	2,717.39	775.57	1,343.23	598.56	0.02
Aug -06	2,728.15	787.30	1,334.41	606.41	0.02
Nov -06	2,738.56	798.13	1,325.87	614.54	0.02
Feb -07	2,730.94	800.11	1,327.78	603.03	0.03
May -07	2,733.50	805.73	1,330.09	597.65	0.02
Aug -07	2,735.72	814.42	1,321.95	599.33	0.03
Nov -07	2,734.54	823.57	1,310.05	600.90	0.03
Feb -08	2,723.14	865.19	1,265.43	592.50	0.02
May -08	2,719.14	882.07	1,246.24	590.80	0.03
Aug -08	2,723.53	889.74	1,241.62	592.15	0.03
Nov -08	2,731.37	901.23	1,232.25	597.86	0.03
Feb-09	2,723.61	913.40	1,214.69	595.49	0.03

Source: DWP Work and Pensions Longitudinal Study

1. Pension Credit replaced MIG on the 6th Oct 2003, however a small number of cases are yet to be converted to PC

Latest statistical data available from: <http://statistics.dwp.gov.uk/asd/tabtool.asp>

3. Disabled and Carers

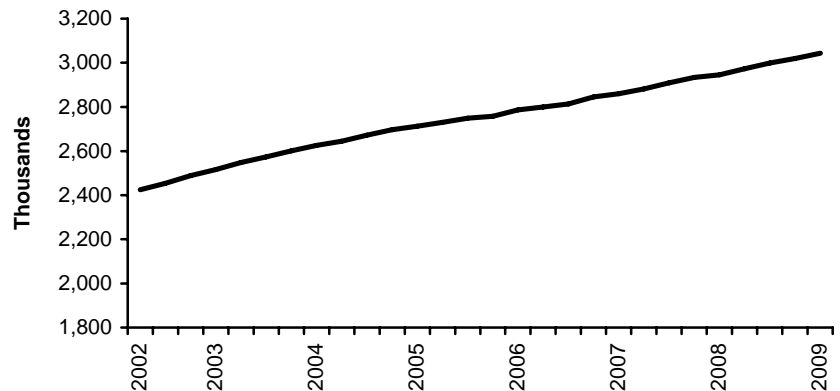
3.1 Disability Living Allowance

Disability Living Allowance (DLA) was introduced on 1st April 1992 and is a benefit for people who have become disabled before the age of 65 and who need assistance with personal care or mobility.

At February 2009, 3.04 million people were receiving Disability Living Allowance (not including suspended cases), a rise of 98 thousand on a year earlier. Of these claimants 50% were male. Both the male and female caseloads are rising, males by 48 thousand and females by 51 thousand in the year to February 2009.

At February 2009, 10% of recipients were children, 57% were working age and 33% were pension age (a small number are an unknown age).

**Disability Living Allowance Recipients:
May 2002 to February 2009**



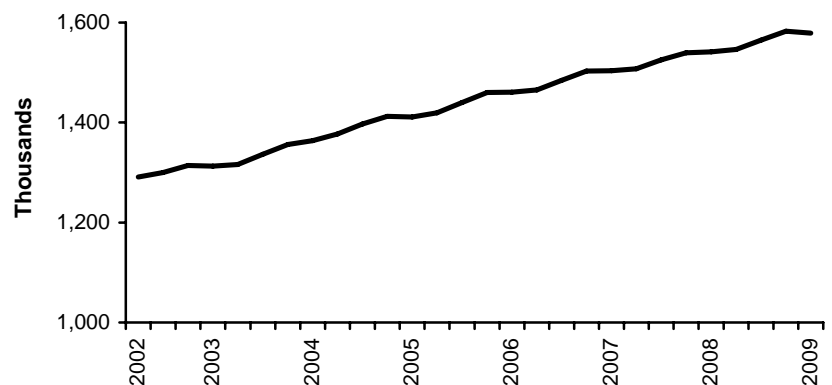
Latest statistical data available from: <http://statistics.dwp.gov.uk/asd/tabtool.asp>

3.2 Attendance Allowance

Attendance Allowance (AA) was introduced on 6th December 1971 and is a benefit for people over the age of 65 who are so severely disabled, physically or mentally, that they need a great deal of help with personal care or supervision. Those requiring constant help receive the higher rate of benefit.

At February 2009 there were 1.58 million people receiving Attendance Allowance (excluding suspended cases), a rise of 37 thousand on a year earlier. Of these, 32% were male and 68% female. Both the male and female caseloads are rising, males by 18 thousand and females by 19 thousand in the year to February 2009. At February 2009, 66% were aged 80 or over.

**Attendance Allowance Cases in Payment:
May 2002 to February 2009**



Latest statistical data available from: <http://statistics.dwp.gov.uk/asd/tabtool.asp>



3.3 Carer's Allowance

Carer's Allowance (CA) was introduced on 5th July 1976; it is paid to carers who look after a severely disabled person for at least 35 hours a week. The severely disabled person must be getting either higher or middle rate DLA care component or AA or maximum rate Constant Attendance Allowance with their War Pension or Industrial Injuries Disablement Benefit.

At February 2009, there were 503 thousand people receiving Carer's Allowance (not including underlying entitlement cases). 26% of claimants were male, and 74% female.

At February 2009, there were a further 424 thousand people entitled to Carer's Allowance but not receiving any payment due to overlapping benefit provisions (i.e. underlying entitlement cases).

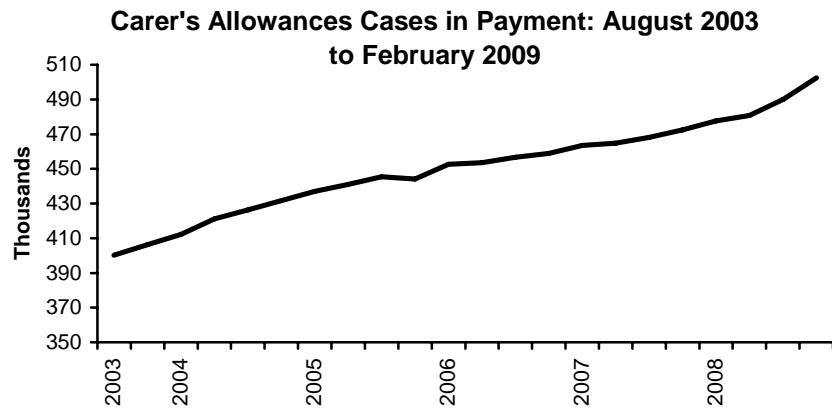


Table 3.1 Awards currently in payment for Disability Living Allowance, Carer's Allowance and Attendance Allowance: August 2002 – February 2009

Thousands

	Disability Living Allowance	Attendance Allowance	Carer's Allowance ¹
Aug-02	2,454.34	1,300.09	"
Nov -02	2,488.49	1,313.74	"
Feb -03	2,516.13	1,312.75	"
May -03	2,547.09	1,315.64	"
Aug -03	2,573.54	1,336.21	400.18
Nov -03	2,601.88	1,356.31	406.23
Feb -04	2,625.39	1,363.81	412.12
May -04	2,644.28	1,377.35	421.18
Aug -04	2,672.16	1,397.30	426.34
Nov -04	2,696.28	1,412.50	431.66
Feb -05	2,712.91	1,411.33	436.94
May -05	2,729.72	1,419.42	441.03
Aug -05	2,749.48	1,440.09	445.43
Nov -05	2,757.64	1,460.25	444.09
Feb -06	2,785.68	1,460.57	452.54
May -06	2,799.16	1,465.59	453.54
Aug -06	2,814.29	1,484.58	456.70
Nov -06	2,845.75	1,503.05	458.93
Feb -07	2,860.79	1,503.85	463.50
May -07	2,881.83	1,507.50	464.67
Aug -07	2,909.98	1,525.61	468.06
Nov -07	2,934.44	1,539.32	472.42
Feb -08	2,945.57	1,541.58	477.66
May -08	2,973.54	1,546.68	480.73
Aug -08	2,999.65	1,565.00	490.03
Nov -08	3,019.70	1,582.81	496.14
Feb-09	3,043.99	1,578.64	502.50

Source: DWP Work and Pensions Longitudinal Study

1. Data is not available prior to August 2003.

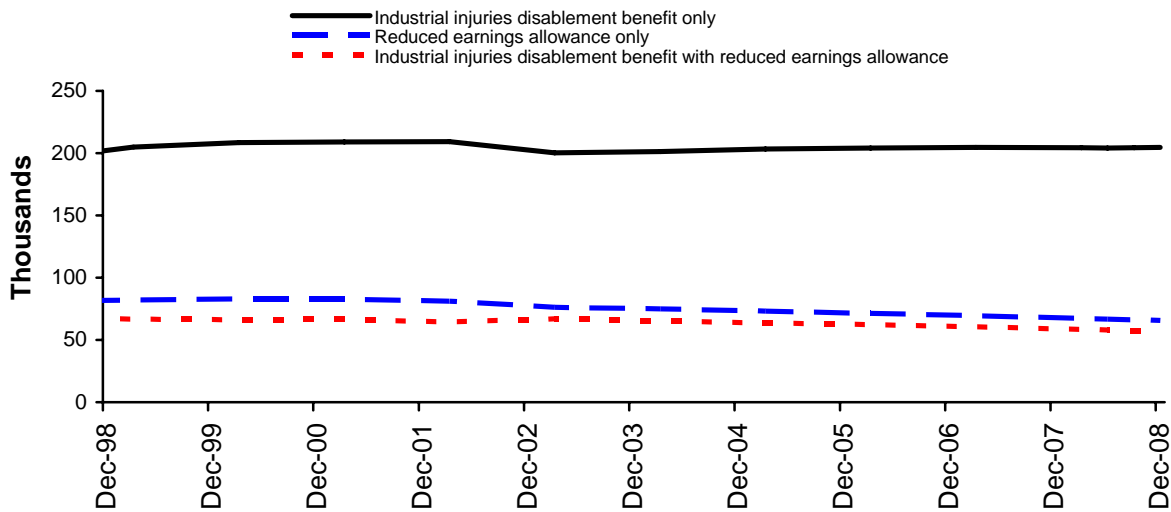
Latest statistical data available from: <http://statistics.dwp.gov.uk/asd/tabtool.asp>

3.4 Industrial Injuries Disablement Benefit

Industrial Injuries Disablement Benefit (IIDB) was introduced on 5th July 1948 and is a benefit for people who are disabled because of an industrial accident or prescribed industrial disease. Since 1st October 1986 any claim resulting in an assessment of less than 14% disabled does not normally attract benefit.

There were 327 thousand people claiming under the Industrial Injuries Disablement Benefit scheme in December 2008, of whom 63% received Industrial Injuries Disablement Benefit only, 20% received Reduced Earnings Allowance only, and 17% received both. The number of people claiming benefit was 2.4% lower than in December 2006. The average weekly payment was £45.45.

Industrial injuries disablement benefit and reduced earnings allowance in payment by type of assessments payable: December 1998 - December 2008



Latest statistical data available from: <http://statistics.dwp.gov.uk/asd/iidb.asp>

4. Families & Children

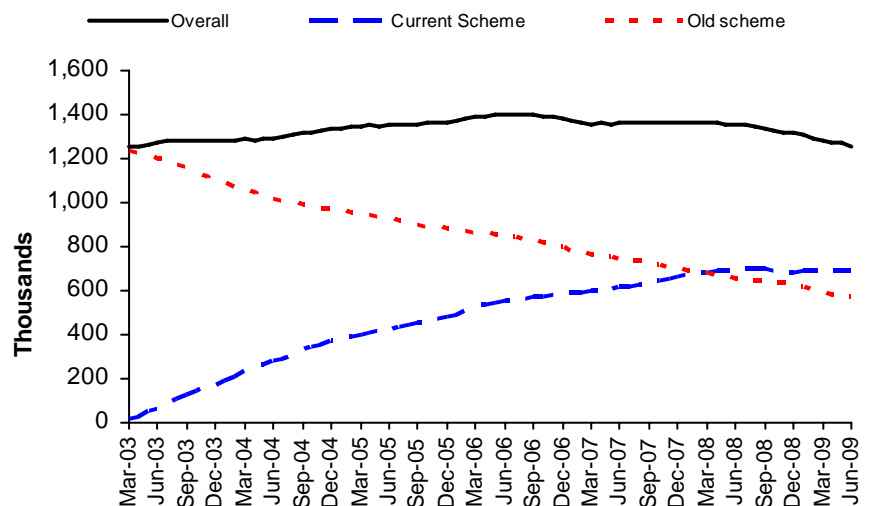
4.1 Child Support Agency cases

The Child Maintenance and Enforcement Commission (CMEC), established as a non-departmental public body under the Child Maintenance and Other Payments Act 2008, is responsible for the child maintenance system in Great Britain. The Commission assumed responsibility for the Child Support Agency (CSA) from the Department for Work and Pensions (DWP) on 1 November 2008.

These statistics, produced by the DWP Information Directorate on behalf of the Child Maintenance and Enforcement Commission, contain the most up-to-date tables and breakdowns on the CSA's two existing statutory child maintenance schemes. The CSA statistics presented here were released on 29th July 2009.

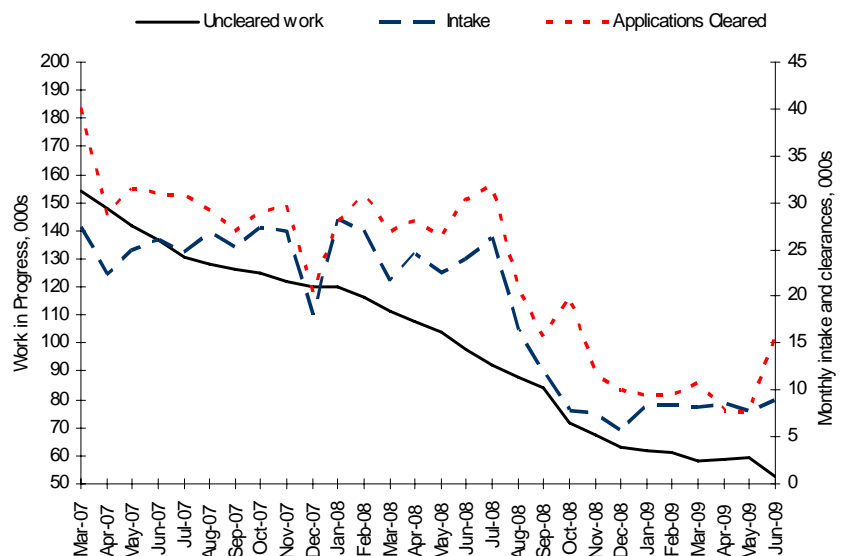
At the end of June 2009, the CSA caseload stood at 1.26 million.

Overall caseload by scheme



The volume of uncleared current scheme applications has fallen by 51,600 since June 2008 and at 40,500 (including clerical cases) is at its lowest since April 2003. This represents a fall of 56% since June 2008.

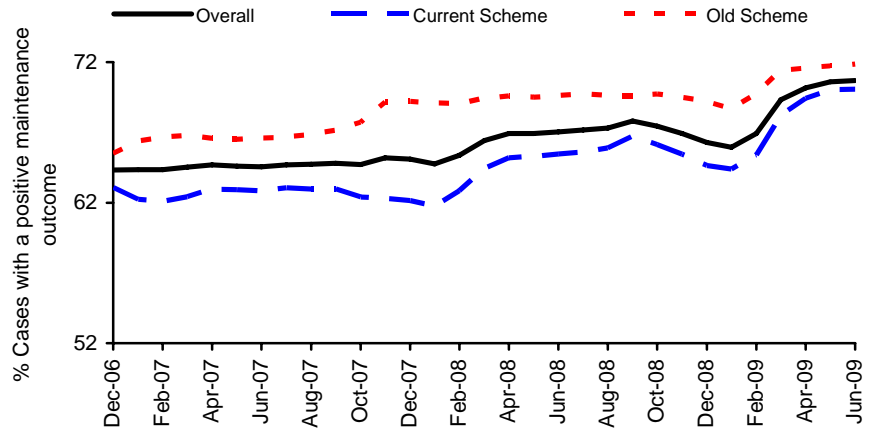
Current scheme application intake, clearances and work on hand: monthly





In the quarter ending June 2009 72% of all cases (including clerical cases) in which maintenance was due had either received maintenance via the CSA collection service, or had a maintenance direct arrangement in place.

Rolling last quarter positive maintenance outcomes for 'live' and assessed CS2 and CSCS cases with a positive maintenance liability



Latest statistical data available from

<http://www.childmaintenance.org/publications/statistics.html>



5. Appeals Service

5.1 Social Security and Child Support Appeals Tribunal (SSCSA)

The Independent Tribunal Service was introduced in 1984 to provide an independent appeals system. It was replaced by the Appeals Service (tAS) in April 2000. From 1st April 2006 the Appeals Service, was renamed as the Social Security and Child Support Appeals Tribunal (SSCSA) and became part of The Tribunals Service (a new Executive agency within the Department for Constitutional Affairs).

Responsibility for publishing statistics on the appeals now resides with SSCSA and they are currently working to publish statistical information via their website <http://www.tribunals.gov.uk/>. The contact for the SSCSA appeals data is: TSSTATS@tribunals.gsi.gov.uk.

Latest statistical data available from <http://www.tribunals.gov.uk/>



NOTES TO EDITORS

1. Modernisation of DWP statistics

The National Statistics paper "DWP statistics transformed: the modernisation of the DWP's data sources and statistical publications" announced major changes to the National Statistics the Department publishes, both in the data sources employed and the methods of dissemination. The paper is available from:

http://statistics.dwp.gov.uk/asd/asd1/stats_consultation/modstats.pdf

2. Links to internet-based statistical tables

For each statistic in this publication, access to more detailed statistics are available by clicking on the web links. For benefit, New Deal and vacancy statistics derived from 100% sources, an internet-based Tabulation Tool is available with the ability for users to define their own statistical queries (available at:

<http://statistics.dwp.gov.uk/asd/tabtool.asp>). A similar Tabulation Tool, derived from 5% sample data, is also available. Data on key benefits continue to be available via NOMIS (<http://www.nomisweb.co.uk/>).

Whenever possible, 100% data should be used in preference to 5% estimates, as these are both more accurate and form DWP's headline statistics. Some statistics remain outside the scope of the Tabulation Tool but will continue to be available via the internet as pre-defined summary tables.

3. Statistical groups

DWP has introduced a new typology to define Statistical Groups within the client group classifications. The aim of the Statistical Group typology is to present each person by the main reasons they are in contact with the Department. Like the client group classification, each client is classified just once, permitting the estimation of the total number of people claiming one or more benefits. The Statistical Group hierarchy is:

- | | |
|---|----------------------------------|
| a] Jobseeker | e] Other income-related benefits |
| b] Employment and Support Allowance and incapacity benefits | f] Disabled |
| c] Lone parents | g] Bereaved |
| d] Carer's | h] Housing Benefit |
| | i] State Pension only recipients |

From November 2008 the "incapacity benefits statistical group" includes Employment and Support Allowance (ESA). ESA replaced Incapacity Benefit and Income Support paid on the grounds of incapacity for new claims from 27th October 2008. Prior to this the "incapacity benefits group" covered people on Incapacity Benefit or Severe Disablement Allowance, including people claiming Income Support on the grounds of incapacity.

4. Jobseeker's Allowance figures at ONS

The preferred source of numbers for Jobseeker's Allowance is the ONS claimant count figure; these are more up to date and contain clerical cases. However the reason we use the DWP JSA figures is that they are consistent with the other benefits used to produce DWP National Statistics, and permit a wider set of breakdowns.

5. Flows on and off benefit

Also available are quarterly experimental figures on flows on and off all the main benefits. It is important that users clearly understand the status of these series and the cautions that apply (which will vary for each statistic). The particular limitations of each series are explained in the information that accompanies them.

6. National Insurance Number Allocations to Overseas Nationals data

In line with the recommendations from the Inter-Departmental Taskforce on Migration Statistics, and to ensure our information can be considered alongside other relevant statistics on migration and employment, quarterly data on allocations of National Insurance numbers to overseas nationals has now been published. Latest publications can be viewed here: <http://statistics.dwp.gov.uk/asd/tabtool.asp>



7. Welfare Reform

Employment Support Allowance replaced Incapacity Benefit and Income Support paid on the grounds of incapacity on 27th October 2008 for new claims. The figures relating to Employment Support Allowance have been thoroughly quality assured to National Statistics standard; however it should be noted that this is a new benefit using a new data source which may not have reached steady state in terms of operational processing and retrospection. Hence ESA and working age client group figures (excluding Jobseekers Allowance) for February 2009 are provisional. The ESA caseload for November 2008 has been revised from 51 thousand to 54 thousand to reflect late notification of claims.

8. Early Estimates

Early estimate figures for 'Lone Parents' and 'ESA and incapacity benefits' working age client groups were released in June 2009. They are designated as experimental official statistics and are estimates of the true caseloads. Latest published figures: <http://statistics.dwp.gov.uk/asd/tabtool.asp>

9. Other National Statistics issued by the Department for Work and Pensions

Abstract of Statistics for Benefits and Contributions and Indices of Prices and Earnings (annual) – provides a reference source for those people interested in the main aspects of benefits, contributions and indices of prices and earnings. Latest published figures: http://statistics.dwp.gov.uk/asd/other_stats.asp

Appeal Tribunal Statistics (quarterly) – provides statistics on appeals and decisions. Latest published figures: <http://statistics.dwp.gov.uk/asd/qat.asp>

Child Support Agency Quarterly Summary of Statistics – provides statistics on the Child Support Agency. Latest published figures: <http://www.childmaintenance.org/publications/statistics.html>

Family Resources Survey (annual) - provides information on the incomes and circumstances of private households in the United Kingdom: <http://statistics.dwp.gov.uk/asd/frs>

Households Below Average Income (annual) - provides information on potential living standards as determined by disposable income, changes in income patterns over time and income mobility: <http://statistics.dwp.gov.uk/asd/hbai.asp>

Housing Benefit and Council Tax Benefit Annual Summary of Statistics – provides statistics on Housing Benefit /Council Tax Benefit from a 1 per cent sample of data from Local Authorities. Latest published figures: <http://statistics.dwp.gov.uk/asd/hbctb.asp>

Housing Benefit and Council Tax Benefit Quarterly Summary of Statistics – provides statistics on Housing Benefit /Council Tax Benefit from quarterly caseload counts and also includes average amounts of benefit. Latest published figures: <http://statistics.dwp.gov.uk/asd/hbctb.asp>

Housing Benefit and Council Tax Benefit Quarterly Performance Statistics – provides high level statistics on Local Authority processing of Housing Benefit / Council Tax Benefit from quarterly administrative returns and also includes speed of processing new claims and charges of circumstances. Latest published figures: http://statistics.dwp.gov.uk/asd/asd1/hb_ctb/performance/performance.asp

Housing Benefit Quarterly Fraud Performance Statistics – provides high level statistics on Local Authority fraud performance from quarterly administrative returns and also includes numbers of referrals, investigations actioned and sanctions administered. Latest published figures: http://statistics.dwp.gov.uk/asd/asd1/hb_ctb/performance/performance.asp

Industrial Injuries Disablement Benefit and Reduced Earnings Allowance Statistics (annual) – provides statistics on current assessments and movements during statistical period. Latest published figures: <http://statistics.dwp.gov.uk/asd/iidb.asp>



Industrial Injuries Disablement Benefit Quarterly Summary of Statistics – *provides statistics on people in receipt of Industrial Injuries Disablement Benefit, new claims and newly diagnosed prescribed diseases. Latest published figures: <http://statistics.dwp.gov.uk/asd/iidb.asp>*

National Insurance numbers allocated to overseas nationals (Previously migrant workers statistics – quarterly) *provides statistics on migrant workers. Latest published figures: http://statistics.dwp.gov.uk/asd/tabtool.asp#ni_alloc*

Neighbourhood Statistics – *Quarterly ward and Lower Super Outputs Area caseloads for Income Support, Jobseeker’s Allowance, Incapacity Benefits, Disability Living Allowance, Attendance Allowance, Pension Credit and State Pension are available from: <http://83.244.183.180/NESS/page1.htm>*

Pensioner Income Series (annual) - *examines the levels, sources and distribution of pensioners' incomes and the position of pensioners within the population income distribution. Latest published figures: http://statistics.dwp.gov.uk/asd/asd6/pensioners_income.asp*

Second Tier Pension Provision (annual) – *contains analysis of contracted out pension schemes. Latest published figures: http://statistics.dwp.gov.uk/asd/asd1/dsu/second_tier/second_tier.asp*

Tax/Benefit Model Tables (annual) – *designed to illustrate the weekly financial circumstances of a selection of hypothetical local authority and private tenants. Latest published figures: <http://statistics.dwp.gov.uk/asd/tbmt.asp>*

11. Other statistical outputs issued by the Department for Work and Pensions

Benefit Expenditure Tables - financial year historic information on benefit expenditure and caseloads, along with forecasts are available from <http://statistics.dwp.gov.uk/asd/asd4/expenditure.asp>