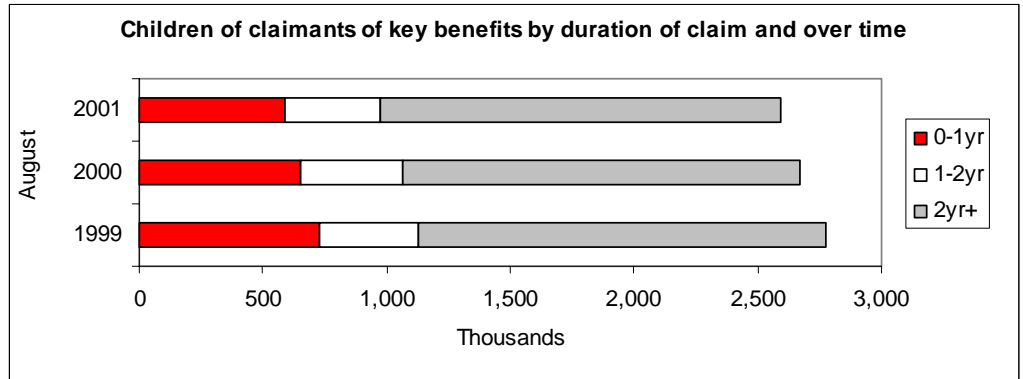


11th April 2002

Coverage: Great Britain
Theme: Social and Welfare

STATISTICAL SUMMARY – MARCH 2002

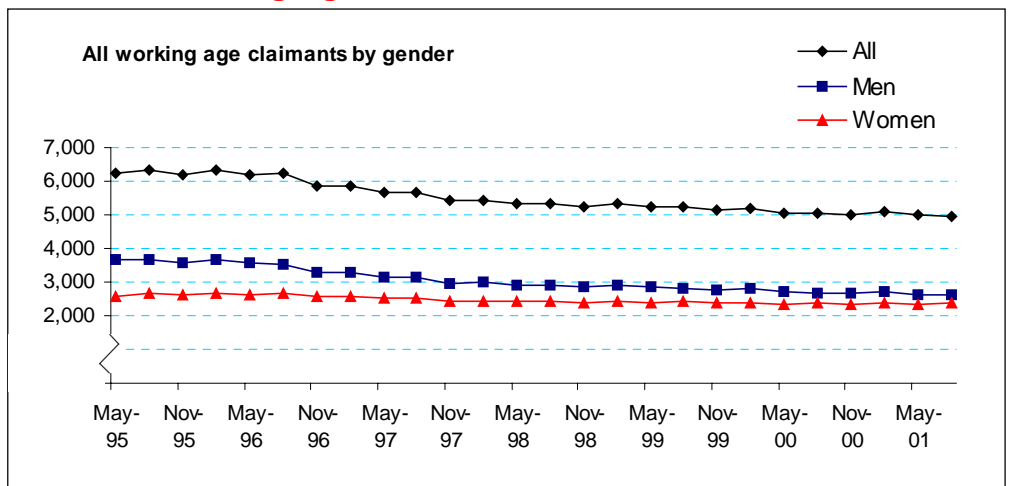
Client Group Analysis: Families with children:



At August 2001:

- 2.6 million children (19.8% of children under 16 and young adults aged 16-18 in full time education) were living in families claiming a key benefit. This number was 188 thousand fewer than 2 years earlier.
- 62% of them had been on benefit for at least two years.

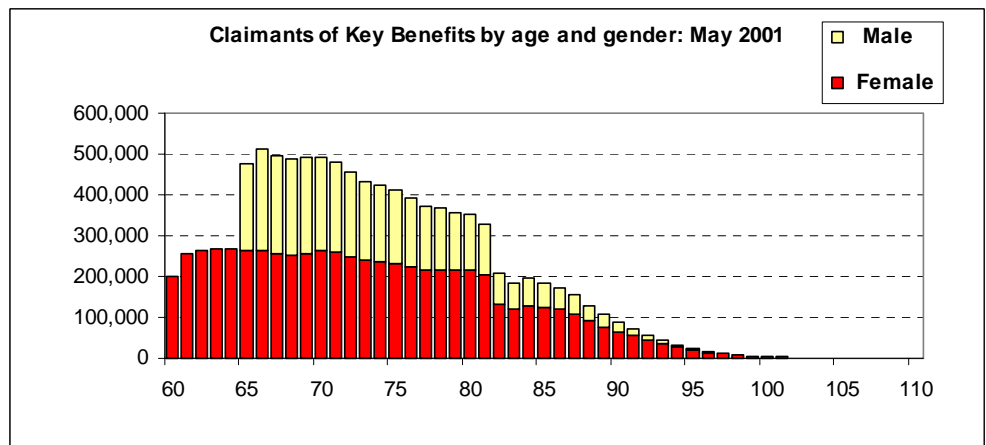
Population of Working Age:



At August 2001:

- Just under 5.0 million people of working age (13.9%) were claiming a key benefit.
- 48% of claimants are women.

Population over State Pension Age:



At May 2001:

- Just over 10.3 million (98%) people over state pension age were claiming a key benefit.
- 37% of claimants are men.

DWP Department for Work and Pensions

Issued by:
Information Centre
Analytical Services Directorate
Department for Work and Pensions

Telephone:
Press Office: 020 7238 0866
Public Enquiries: 020 7712 2171

DWP website:
www.dwp.gov.uk

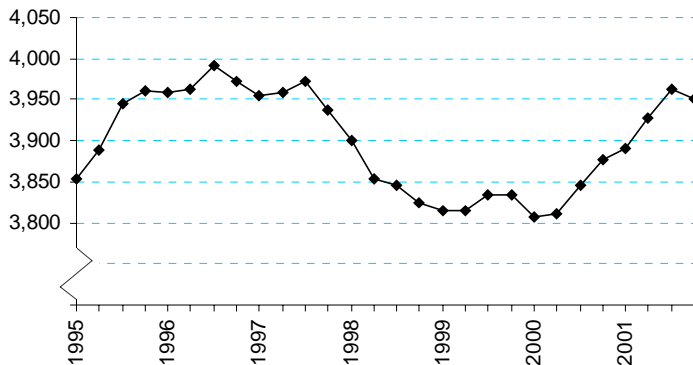
Statistician:
Stuart Grant
Information Centre
Analytical Services Directorate
Department for Work and Pensions
Room BP5 2 01
Benton Park View
Benton Park Road
Longbenton
NEWCASTLE UPON TYNE
NE98 1YX

Telephone : 0191 225 6048
Facsimile : 0191 225 3193
email :
stuart.grant@dwp.gsi.gov.uk

Next Publication:
11th July 2002

Income Support:

Number of recipients (000s)

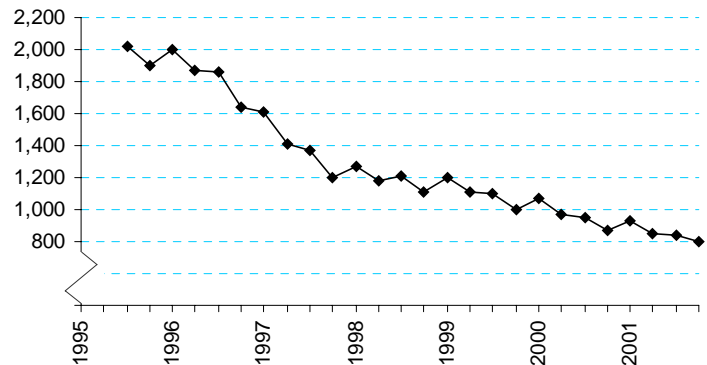


At 23rd November 2001:

- All claimants: 3.9 million (£70 per week), fell by 14 thousand in the quarter to November 2001, but rose by 73 thousand on the year (most of this rise is due to an increase in the Minimum Income Guarantee caseload)
- Lone parents (excluding the disabled) represent 22% of the IS caseload – 867 thousand (£104 per week).
- Disabled recipients represent 26% of the caseload – 1,044 thousand (£76 per week) and has been increasing since 1993.
- Almost two thirds of recipients are women.

Jobseeker's Allowance (not seasonally adjusted):

Number of recipients (000s)

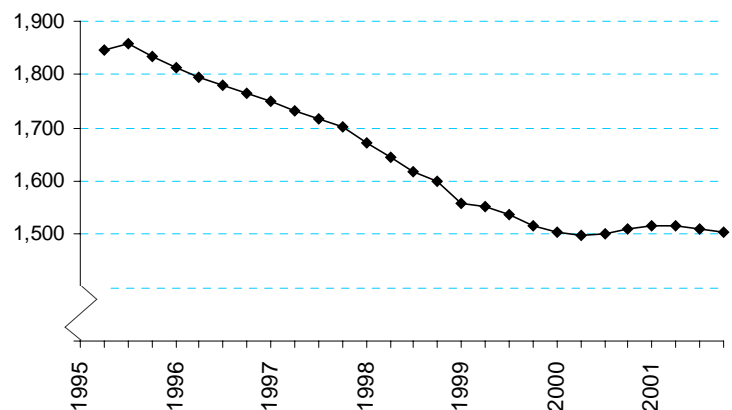


At 8th November 2001:

- Total claimants: 889 thousand.
- Total recipients: 800 thousand, 151 thousand with only contribution-based JSA, 649 thousand with income-based JSA including (18 thousand with underlying entitlement to contribution-based benefit).
- Average weekly entitlement: £61 income-based, £51 contribution-based.
- Almost a quarter of claimants are women.

Incapacity Benefit:

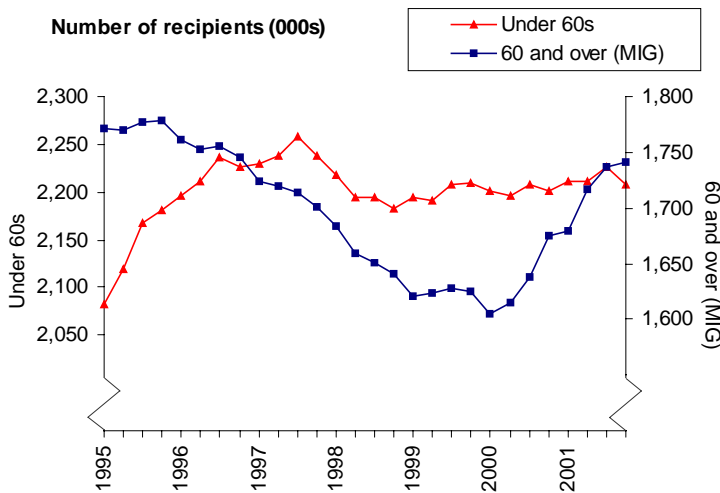
Number of recipients (000s)



At 30th November 2001:

- Total claimants: 2.3 million.
- Total recipients: 1.5 million.
- Average amount: £83 per week.
- Almost two-thirds of recipients are men

Number of recipients (000s)



Caution: multiple axes are used to show recent trends on the same chart.

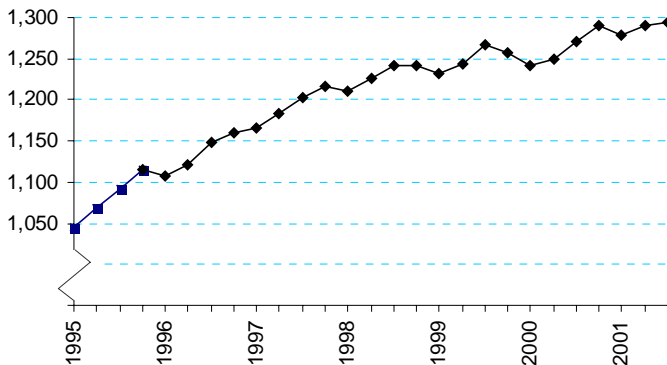
At 23rd November 2001:

- The 60 and over (Minimum Income Guarantee – MIG) caseload: 1.7 million (£50 per week), rose by 5 thousand in the quarter and rose by 66 thousand over the year.
- The non-MIG caseload (those aged under 60): 2.2 million (£86 per week), fell by 19 thousand in the quarter to November 2001, and rose by 7 thousand on the year.

Caution:
Variable scale vertical axes are used to show recent trends.

Attendance Allowance:

Number of recipients (000s)



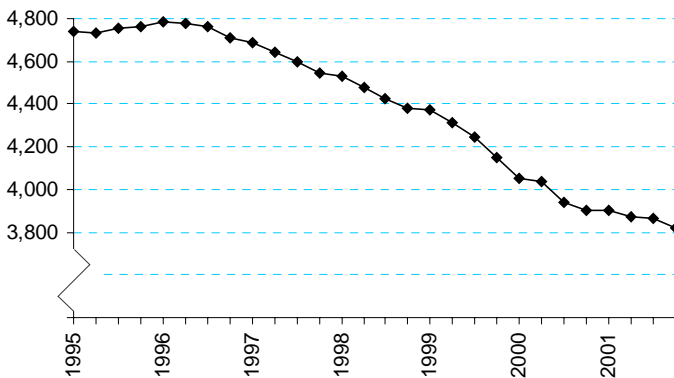
At 31st August, 2001:

- Total recipients: 1.3 million of which 606 thousand receive the higher rate and 688 thousand the lower.
- Average amount: £46 per week.
- 71% of recipients are women.

NB: Prior to the fourth quarter of 1995, Attendance Allowance caseload figures were collected annually and thereafter quarterly.

Housing Benefit:

Number of recipients (000s)

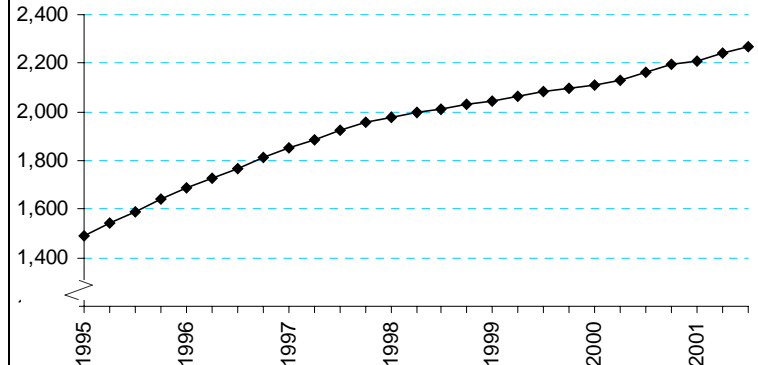


At 8th November, 2001:

- Total recipients: 3.8 million.
- Average weekly amount: £52
- Total recipients (aged over 60): 1.7 million (at May 2000).
- Total recipients (with children): 1.3 million (at May 2000).
- 68% of HB recipients are also in receipt of IS or JSA (income based).

Disability Living Allowance:

Number of recipients (000s)

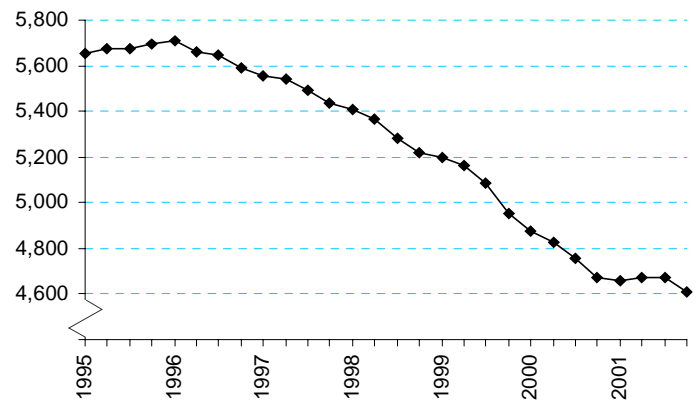


At 31st August, 2001:

- Total recipients: 2.3 million.
- Average amount: £54 per week.
- 572 thousand received only the mobility component, 298 thousand received only the care component and 1.4 million received both mobility and care components
- 49% of recipients are women.

Council Tax Benefit:

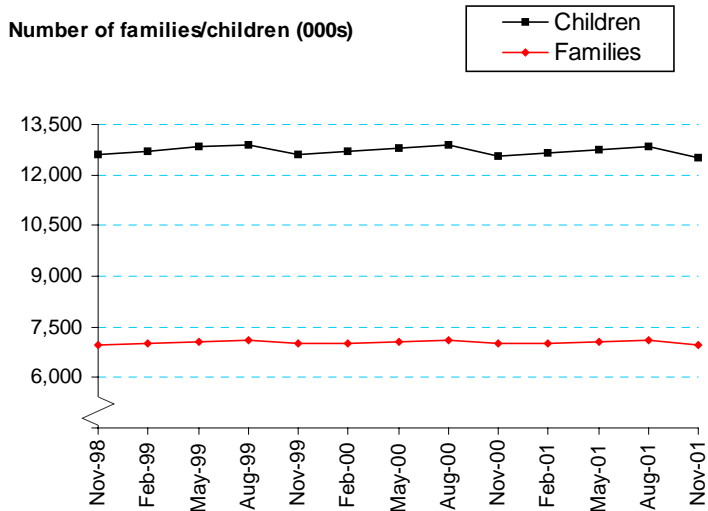
Number of recipients (000s)



At 8th November, 2001:

- Total recipients: 4.6 million (excludes second adult rebates).
- Average weekly amount: £10
- Total recipients (aged over 60): 2.4 million (at May 2000).
- Total recipients (with children): 1.3 million (at May 2000).
- 67% of CTB recipients are also in receipt of IS or JSA (income based).

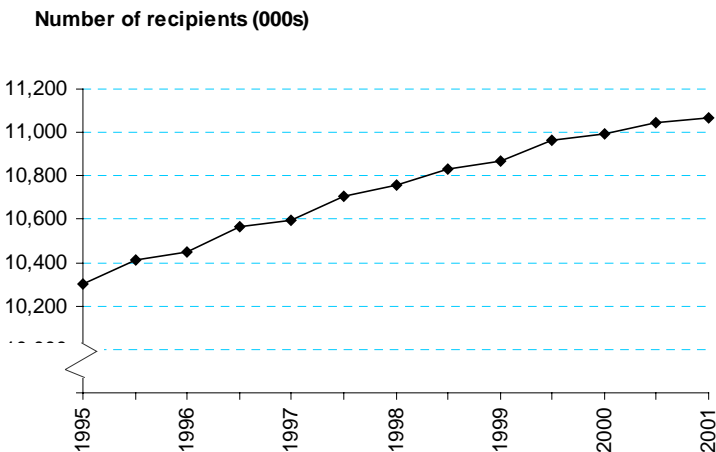
Child Benefit:



At 30th November 2001:

- Total children: 12.5 million in 7.0 million families.
- It is estimated that 95% of Child Benefit recipients are female.

Retirement Pension:



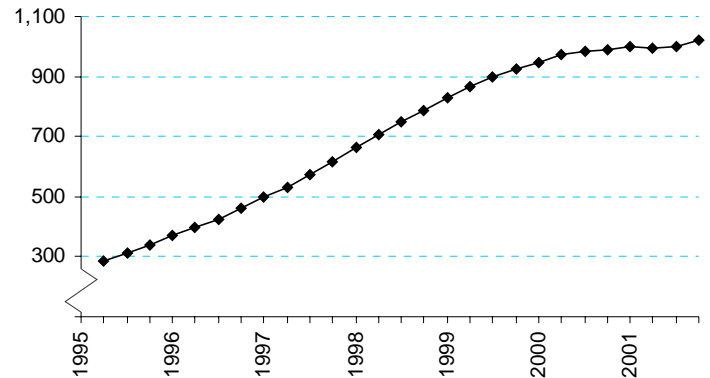
At 30th September, 2001:

- Total recipients: 11.1 million, of which 0.9 million reside overseas.
- Average amount of entitlement to state pension:
All pensioners: £73 per week.
Men: £88 per week.
Women: £64 per week.
- 63% of recipients are women.

Caution:
Variable scale vertical axes are used to show recent trends.

Child Support Agency:

Number of 'Live' and fully assessed cases (000s)



At 30th November 2001:

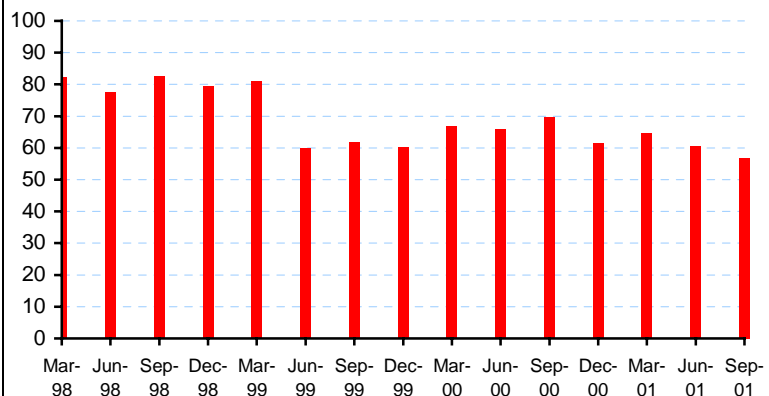
- Total 'live' and fully assessed cases: 1.0 million.

For fully assessed cases:

- Average assessed maintenance for employees is £38 per week; for the self employed it is £23 per week.
- For those using the CSA collection service, 51.3% are fully compliant, 21.6% are partially compliant and 27.1% are nil compliant.
- 94% of parents with care are female.

The Appeals Service:

Number of new lodgements (000s)

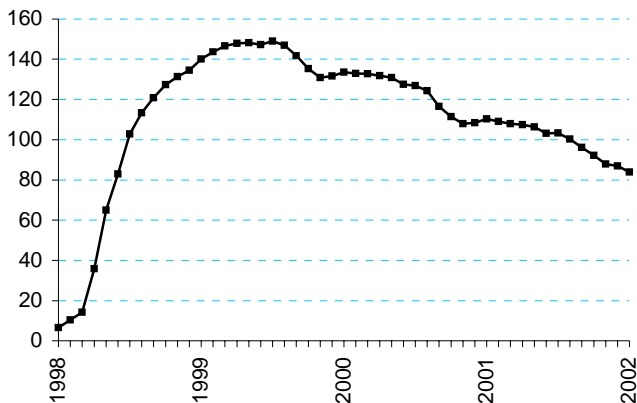


Quarter ending September 2001:

- Number of new lodgements: 56.9 thousand.
- Total number of appeals cleared at hearings: 45.8 thousand. Of these, 20.0 thousand (44%) were found in favour of the appellant.
- 44.7% of appeals heard at oral hearings were found in the appellant's favour.
- 15.9% of appeals heard at paper hearings were found in the appellant's favour.

New Deal for Young People:

Number of participants (000s)

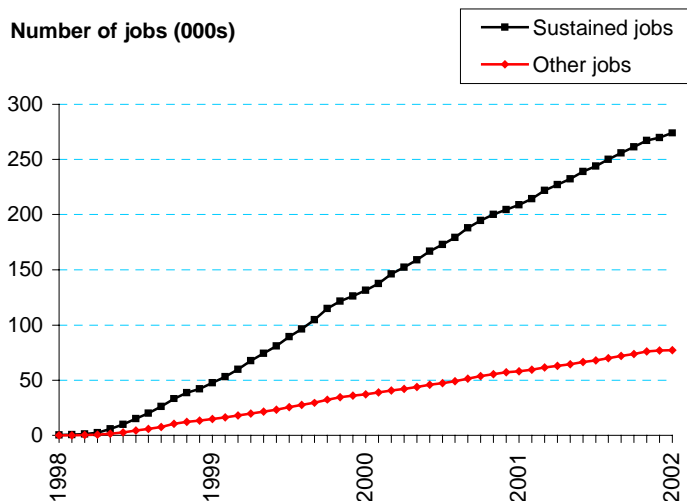


By end January 2002:

- 754 thousand starts on New Deal by the end of January 2002; 670 thousand have left, leaving 84 thousand participants at the end of January 2002.
- Of the leavers, 40% have entered sustained unsubsidised jobs, 11% have transferred to other benefits, 20% have left for other known reasons, and 29% for unknown reasons.

Young People into Employment:

Number of jobs (000s)

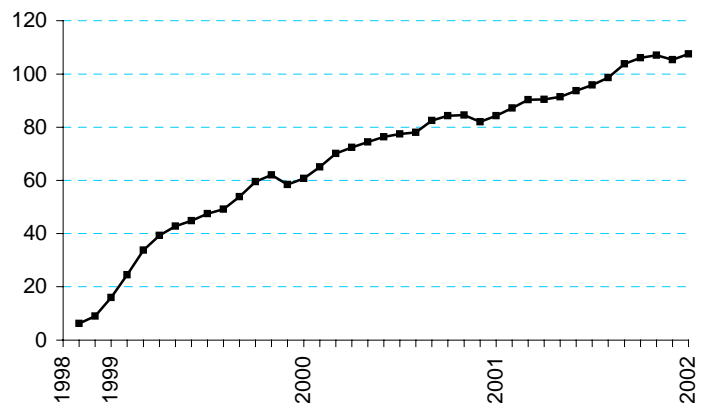


By end January 2002:

- 351 thousand young people in jobs to the end of January 2002. Of which, 274 thousand are sustained jobs, and 77 thousand were jobs lasting less than 13 weeks.

New Deal for Lone Parents:

Number of participants (000s)

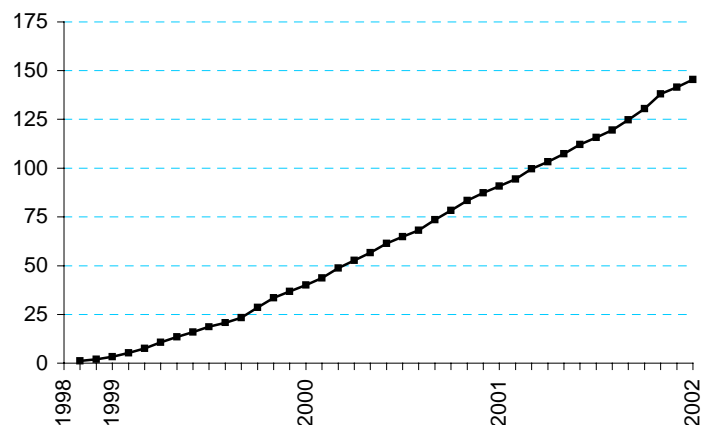


All figures relate to the period from October 1998 when New Deal for Lone Parents (NDLP) was fully implemented nationally, to the end of January 2002:

- Starts on the NDLP caseload reached 319 thousand at the end of January 2002, an increase of 9 thousand on December 2001.
- A total of 211 thousand lone parents had left NDLP by end of January.
- 108 thousand lone parents were participating on NDLP at end of January.
- 361 thousand lone parents had attended an initial interview by the end of January – 11 thousand more than at the end of December 2001.

Lone Parents into Employment:

Number of jobs (000s)

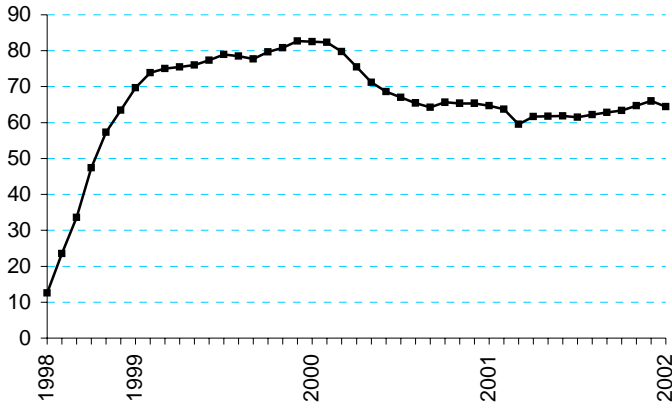


All figures relate to the period from October 1998 when New Deal for Lone Parents (NDLP) was fully implemented nationally, to the end of January 2002:

- 145 thousand jobs gained by participants on New Deal for Lone Parents.

New Deal for Long Term Unemployed People aged 25+:

Number of participants (000s)

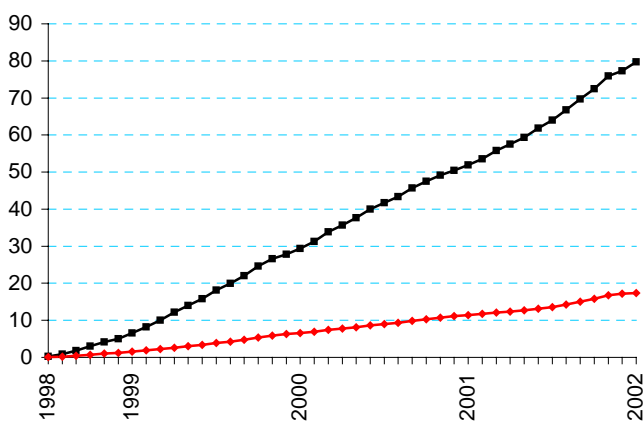
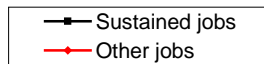


By end of January 2002:

- 454 thousand starts on New Deal by the end of January 2002 - 389 thousand have left, leaving 65 thousand participating at the end of January 2002.

Long Term Unemployed People aged 25+ into Employment:

Number of jobs (000s)

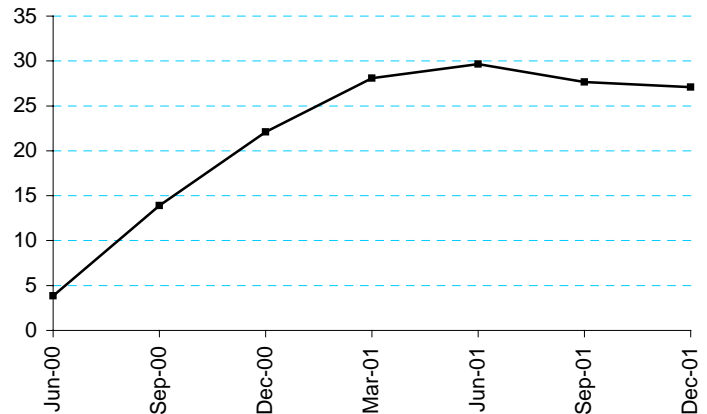


By end of January 2002:

- 95 thousand people on New Deal into jobs to the end of January 2002. Of which, 78 thousand are sustained jobs, and 17 thousand were jobs lasting less than 13 weeks.

Employment Zones:

Number of participants (000s)



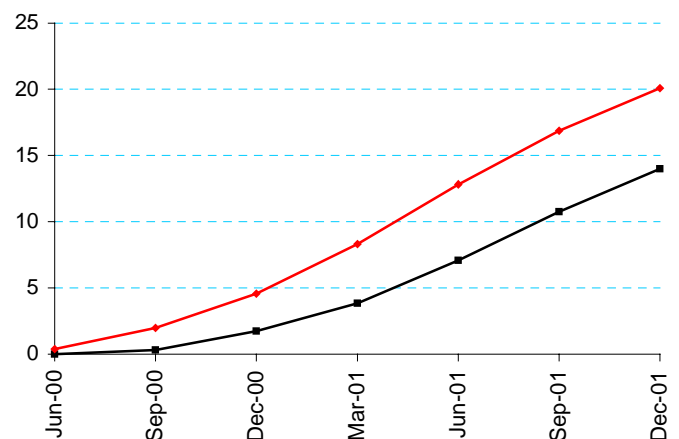
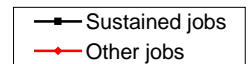
from July 2001 figures include people returning to Employment Zones for a second time

By the end of December 2001:

- 57,700 people started on an Employment Zone between April 2000 when the Zones started and December 2001. 85 per cent of entrants were male and 72 per cent were white.
- On 31 December 2001, there were 27,100 people participating on an Employment Zone, of whom 4,400 were returning for a second time.

Employment Zone Participants into Employment :

Number of jobs (000s)



By end of December 2001:

- 20,100 Employment Zone participants entered employment by December 2001, of which 400 were participants returning to a Zone for a second time.
- Of the 36,400 people who entered an Employment Zone between April 2000 and March 2001, 39 per cent had moved into employment by the end of December 2001 and 80 per cent of these had been in employment for 13 weeks or more.

Warning: The purpose of the DWP Statistical Summary is to provide an up-to-date overview of the most important benefits, schemes, agencies and associated bodies administered by the DWP in a concise format. Users seeking more detailed information are directed to the contact point on the front page. Financial year benefit expenditure information is available in the Social Security Departmental Report - The Government Expenditure Plans 2001/02 – 2003/04 and main estimate 2001/02. The average weekly amounts and caseloads in this summary are derived from administrative data which have been validated, cleaned and published by DWP. Many of these statistics are calculated from samples drawn at particular points in time and are therefore subject to some sampling variability. The figures have not been seasonally adjusted. Average amounts are rounded to the nearest pound.

A brief description of the analyses included in this publication:

Client Group Analysis (Families with children) combines data collected for Jobseeker's Allowance, Income Support, Disability Living Allowance, Incapacity Benefit and Severe Disablement Allowance.

Client Group Analysis (Working Age) combines data collected for Jobseeker's Allowance, Incapacity Benefit, Severe Disablement Allowance, Disability Living Allowance and Income Support.

Client Group Analysis (Over State Pension Age) combines data for Attendance Allowance, Disability Living Allowance, Incapacity Benefit, Income Support, Retirement Pension and Severe Disablement Allowance.

Income Support (IS) was introduced on April 11th, 1988 and is an income related benefit that can be claimed by people normally aged 18 or over that work less than 16 hours a week and have insufficient income to meet their needs. Additional help is available for partners and children of claimants

Incapacity Benefit (IB) was introduced on April 13th, 1995 and is paid to people who are incapable of work and who have paid sufficient contributions throughout their working life.

Jobseeker's Allowance (JSA) was introduced on October 7th, 1996 and is a contributory or income related benefit paid to people under pensionable age who are available for and actively seeking work of at least forty hours per week. They agree with the Employment Service any restrictions on their availability for work and the steps they intend to take in order to find work. Additional help is available for partners and children of claimants.

Disability Living Allowance (DLA) was introduced on April 1st, 1992 and is a benefit for people who have become disabled before the age of 65 and who need assistance with personal care or mobility.

Attendance Allowance (AA) was introduced on December 6th, 1971 and is a benefit for people over the age of 65 who are so severely disabled, physically or mentally, that they need a great deal of help with personal care or supervision. This assistance could be required during the day or at night. Those requiring constant help receive the higher rate of benefit.

Housing Benefit (HB) was introduced on April 1st, 1983 and is an income related benefit designed to help people on low incomes pay for rented accommodation whether in or out of work.

Council Tax Benefit (CTB) was introduced on April 1st, 1993 and is an income related benefit, calculated in a similar way to housing benefit, which has been designed to help people on low incomes pay their council tax.

Child Benefit (ChB) was introduced on April 5th, 1977 and is a benefit paid for all children up to the age of sixteen (or nineteen if in full time education up to A-level or equivalent standard). A higher rate of child benefit is payable for the first child. Certain lone parents with reserved rights may remain eligible for Child Benefit (Lone Parent).

Retirement Pension (RP) was introduced on January 1st, 1909 and is paid to people who have attained the state pension age (65 for men, 60 for women) and who fulfil the residency and contributions conditions.

Child Support Agency (CSA) was introduced on April 5th, 1993 and is responsible for tracing Non-Resident Parents (NRPs) and working out how much maintenance they should pay. The CSA can collect and enforce maintenance assessments.

The Appeals Service (TAS) The Independent Tribunal Service was introduced in 1984 to provide an independent appeals system. It was replaced by the Appeals Service in April 2000.

New Deal for Young People Those aged 18-24 who have been claiming JSA continuously for 6 months become eligible for New Deal when they reach the 6-month threshold. Those joining New Deal first enter a Gateway period lasting up to 4 months, during which Employment Service (ES) and their partners will work with them to improve their employability, and to find unsubsidised jobs for as many as possible.

New Deal for Long Term Unemployed aged 25+ Those aged 25+ who have been claiming JSA continuously for 2 years become eligible for New Deal when they reach the 2 year threshold. Those joining New Deal first enter an Advisory Process lasting between 3-6 months with an average of 7 interviews during which Employment Service (ES) and their partners will work with them to improve their employability, and to find unsubsidised jobs for as many as possible. From April 2001, those aged 25+ who have been claiming JSA continuously for 18 months become eligible for New Deal when they reach the 18 month threshold. Those joining New Deal first enter a flexible Gateway period lasting up to four months where provision and level of help will be tailored to the needs of the individual.

New Deal for Lone Parents is available to all lone parents on Income Support on a voluntary basis, but originally only those lone parents with a youngest child of school age (5 years and 3 months) were sent an invitation letter explaining what the service could offer. Following the initial adviser interview, lone parents may either agree or decline to join the NDLP caseload. Whilst on the caseload participants will receive a package of support and guidance to help them into jobs.

Employment Zones Employment Zones pool funds for training, Employment Service support and the equivalent of benefit to maximise flexibility and give individuals more say in the choices which affect them. The aim is to get people into jobs and keep them in work. Employment Zones were set up in April 2000 in areas of persistently high unemployment. They are a mandatory programme for participants receiving Income-Based Jobseeker's Allowance who have been unemployed for 12 or 18 months (depending on the zone). From July 2001, Zone participants who had been unsuccessful in obtaining a job after 26 weeks of active job-search in Step 2 of the programme, are re-mandated to Zones after a further 13 week period of claiming Income-Based Jobseeker's Allowance.

Other National Statistics issued by the Department for Work and Pensions:

Abstract of Statistics for Benefits and Contributions and Indices of Prices and Earnings (annual) – provides a reference source for those people interested in the main aspects of benefits, Contributions and Indices of prices and earnings.

Appeal Tribunal Statistics (quarterly) – provides statistics on appeals and decisions.

Fraud and Error in Claims for Income Support and Jobseeker's Allowance (six monthly) – reports the amount of fraud, customer and departmental error.

Child Benefit Statistics Quarterly Enquiry – provides statistics on Child Benefit claimants.

Child Support Agency Quarterly Summary of Statistics – provides statistics on the Child Support Agency.

Contributions and Qualifying Years for Retirement Pension (annual) – provides statistics on the number of people who have qualified for Retirement Pension.

Client Group Analysis: Quarterly Bulletin on families with children on key benefits - uses existing data to give a more coherent picture for those families with children on key benefits in Great Britain. Includes statistics on Maternity Allowance.

Client Group Analysis: Quarterly Bulletin on the population of working age on key benefits – uses existing data to give a more coherent picture for those of working age on key benefits in Great Britain.

Client Group Analysis: Quarterly Bulletin on the population over state retirement age – uses existing data to give a more coherent picture for those of over state retirement age on key benefits in Great Britain.

Disability Living Allowance, Attendance Allowance and Invalid Care Allowance Statistics (quarterly) – provides statistics on Disability Living Allowance, Attendance Allowance and Invalid Care Allowance.

Employment Zones (six-monthly) - contains information on the number of Employment Zone starters and participants, the characteristics of entrants, those sustaining 13 weeks in employment and those returning to Employment Zones for a second time; together with information on numbers into employment.

Family Resources Survey (annual) – provides characteristics of individuals at various positions in the income distribution.

Households Below Average Income (annual) – provides estimates of patterns of disposable income in Great Britain.

Housing Benefit and Council Tax Benefit Annual Summary of Statistics – provides statistics on Housing Benefit /Council Tax Benefit from a 1% sample of data from Local Authorities.

Housing Benefit and Council Tax Benefit Quarterly Summary of Statistics – provides statistics on Housing Benefit /Council Tax Benefit from quarterly caseload counts. Includes average amounts of benefit.

Incapacity Benefit and Severe Disablement Allowance Quarterly Summary of Statistics –provides statistics on Incapacity Benefit and Severe Disablement Allowance claimants.

Income Support Statistics Quarterly Enquiry – provides statistics on Income Support claimants.

Industrial Injuries Disablement Benefit and Reduced Earnings Allowance Statistics (annual) – provides statistics on current assessments and movements during statistical period.

Industrial Injuries Disablement Benefit Quarterly Summary of Statistics on New Claims (Accidents and Prescribed Diseases) and First Diagnoses (Prescribed Diseases only) – provides statistics on new claims and newly diagnosed prescribed diseases.

Jobseeker's Allowance Quarterly Statistical Enquiry - provides statistics on Jobseeker's Allowance claimants.

Migrant Workers Statistics (annual) – provides statistics on migrant workers.

New Deal for Lone Parents (quarterly) – provides statistics on the New Deal for Lone Parents.

New Deal for Young People and Long-term Unemployed People aged 25+ (quarterly) – provides statistics on the New Deal for Young People and the New Deal for Long-term Unemployed People aged 25+.

Pensioner Income Series (annual) - examines the levels, sources and distribution of pensioners' incomes and the position of pensioners within the population income distribution.

Retirement Pension Summary of Statistics (six-monthly) – provides statistics on Retirement Pension claimants residing in GB and overseas.

Second Tier Pension Provision (annual) – contains analysis of contacted out pension schemes.

Take-up of Income-Related Benefits (annual) - contains information on the take-up of the main income related benefits in Great Britain: Income Support, Housing Benefit, Council Tax Benefit and Jobseeker's Allowance (income based). Take-up is measured by caseload - the number of benefit recipients compared with the number who would be receiving if everyone took up their entitlement for the full period of their entitlement - and expenditure - the total amount of benefit received compared with the total amount that would be received if everyone took up their entitlement for the full period of their entitlement.

Tax/Benefit Model Tables (annual) – designed to illustrate the weekly financial circumstances of a selection of hypothetical local authority and private tenants.

Work and Pension Statistics (annual) –a summary of all Department for Work and Pensions National Statistics, covers all social security benefits. Also includes take up of benefits and appeals

Other statistical outputs issued by the Department for Work and Pensions:

Neighbourhood Statistics – ward and local authority statistics for Income Support, Jobseeker's Allowance, Incapacity Benefit, Severe Disablement Allowance, Attendance Allowance, Disability Living Allowance and Family Credit are available from <http://www.statistics.gov.uk/neighbourhood/home.asp> or on request.